

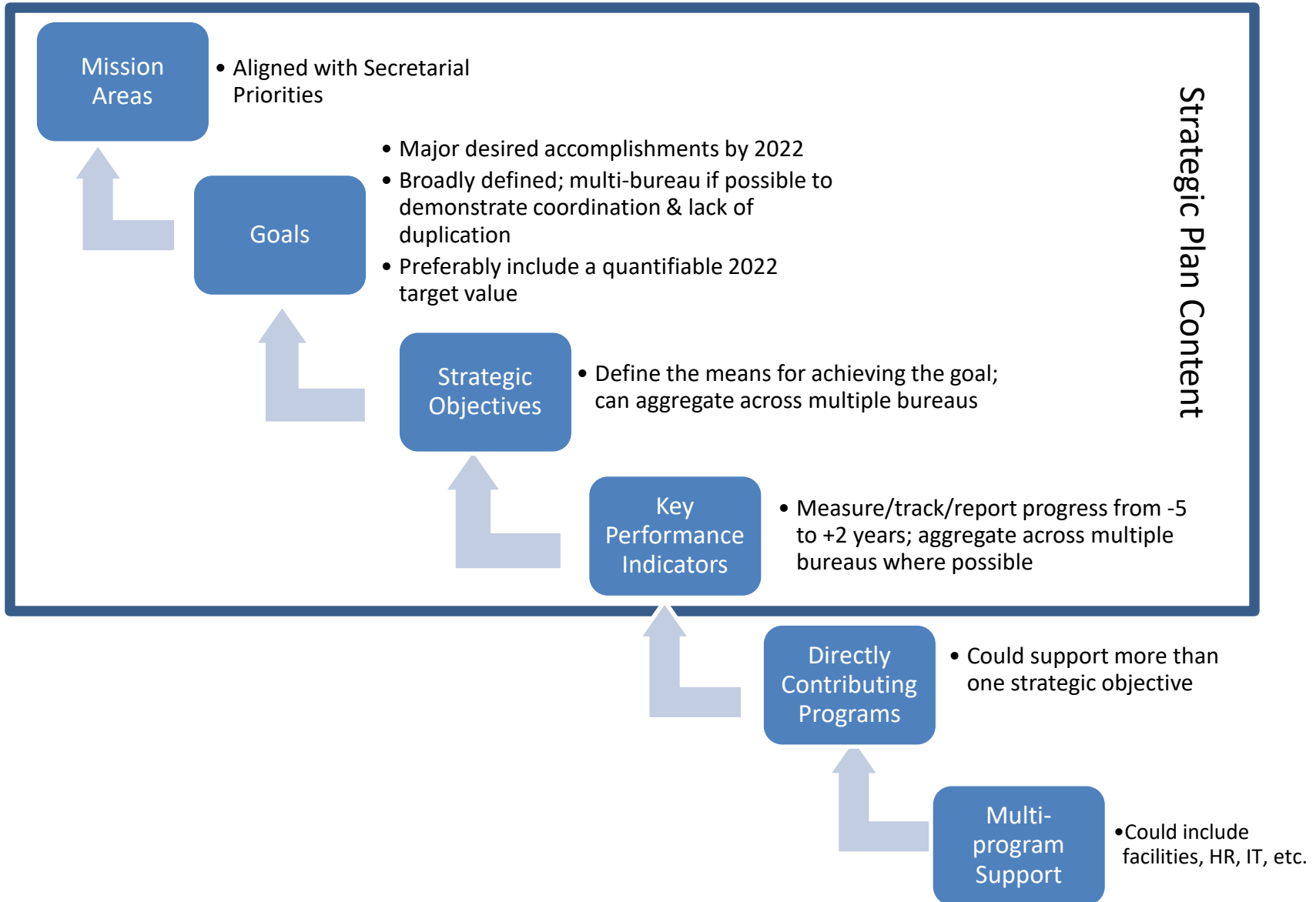


**FY 2018-2022**  
**Department of the Interior**  
**Strategic Plan**

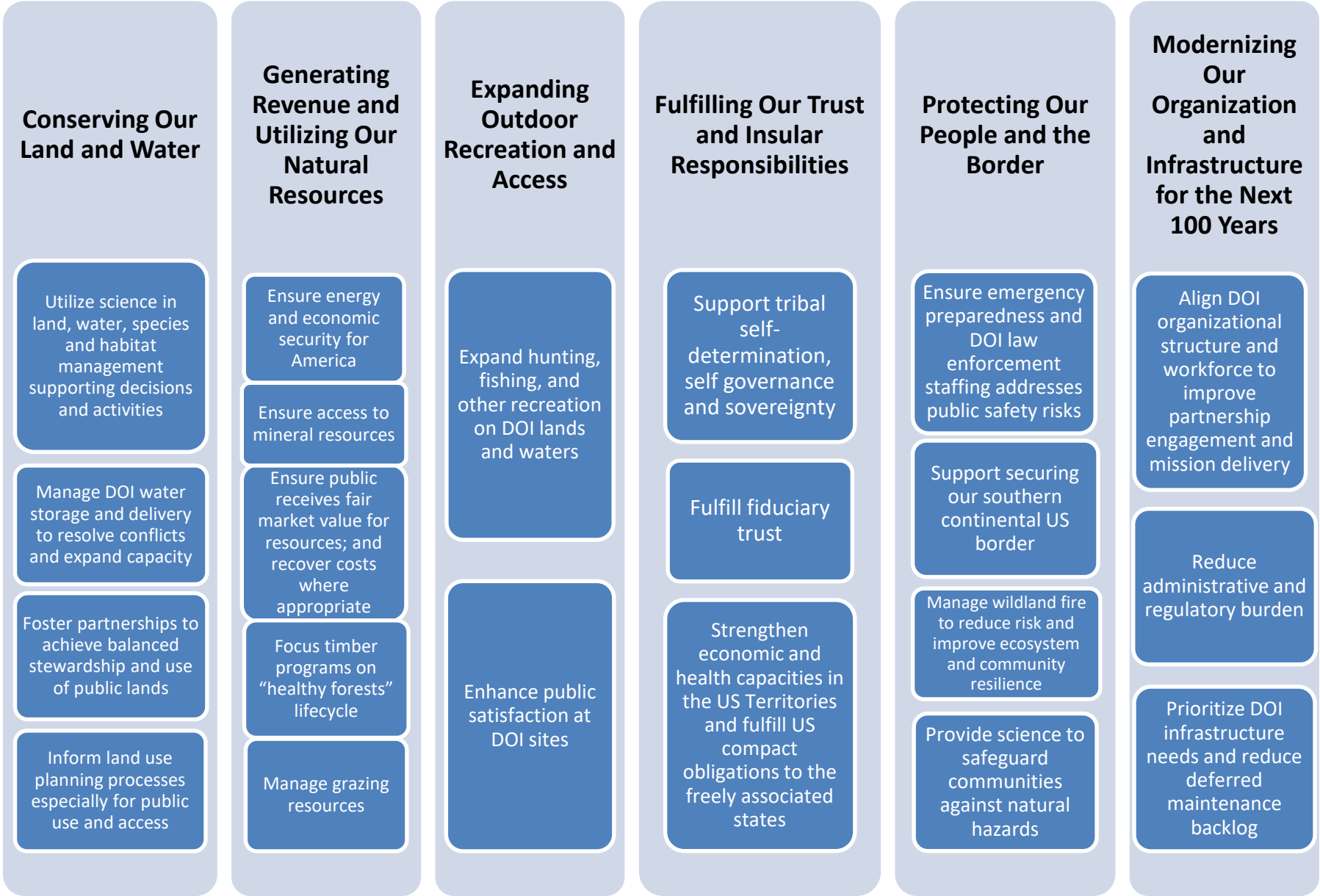
# Strategic Planning, Performance Measurement and Reporting per the GPRA Modernization Act

- Strategic Plans provide a Department-level overview through the next 5 years; updated within 1 year following a presidential inauguration
  - Strategic goals outline the Department’s overarching desired achievements across bureaus
  - Key performance indicators (measures) provide information on progress for planning, decision making, public transparency and accountability
  - Goals attempt to focus on outcome results benefitting the public rather than completion of interim activities (“outputs”)
- Progress toward achieving the goals is quantifiably measured and reported annually
  - through at least 5 years of past history and 2 years of future targets
  - provided to Congress each February (with the release of the President’s Budget)
- Bureaus provided key performance measures that are representative of their activities and can be quantifiably measured; 3 years of history and 2 years of targets needed to qualify

# Strategic Planning Hierarchy



# Strategic Plan Framework



# Key Performance Indicators

- **Manage water resources and delivery**
  - Percent of (BIA) projects completed in support of water management, planning, and pre-development.
- **Manage sales of timber and forest product resources**
  - Percent of Annual Allowable Cut prepared and offered for sale or free use
- **Provide for sustainable forage and grazing**
  - Percent of tribal range units assessed during the reporting year for level of utilization
- **Support self-governance and self-determination**
  - Percent of Self-Governance Single Audit Act reports submitted during the reporting year for which management action decisions on audits are made within 6 months
  - Percent of Self-Determination Single Audit Act reports submitted during the reporting year for which management action decisions on audits are made within 6 months
- **Ensure accurate and timely management of fiduciary trust assets**
  - Total average gain in earnings of participants that obtain unsubsidized employment through Job Placement Training programs for tribes submitting P.L. 102-477 related reports
  - Percent of active, supervised Individual Indian Monies (IIM) case records reviewed in accordance with regulations 98%
  - Increase in the percentage of submitted land-into-trust applications with determinations (Fee to Trust)
- **Strengthen Indian Education**
  - Percent of students attending BIE-funded schools completing high school with a regular diploma within four years of their 9th grade entry date
- **Ensure public safety**
  - Percent of criminal offenses solved by arrest (Part 1 Offense Clearance Rate)
- **Maintain critical infrastructure and facilities to ensure effective operations and service delivery**
  - Percent of historic structures on DOI inventory in good condition
  - Percent of museum collections on DOI inventory in good condition
  - Percent of archaeological sites on DOI inventory in good condition
  - Percent of miles of BIA road in acceptable condition based on the Service Level Index
  - BIA Percent of BIA bridges in acceptable condition based on the Service Level Index
  - BIE Percent of students in BIE school facilities that are in acceptable condition as measured by the Facilities Condition Index

# Supporting Bureau-specific Performance Indicators

- **Manage water resources and delivery**
  - Number of linear miles of functional BIA irrigation project canals servicing irrigated lands
  - Percentage of maintenance projects that are completed within established timeframes
- **Provide for sustainable forage and grazing**
  - Percentage of grazing permits monitored annually for adherence to permit provisions, including permittee compliance with requirements described in conservation plans.
- **Ensure accurate and timely management of fiduciary trust assets**
  - Percent of title encumbrances requested during the reporting year that are completed by the end of the reporting year
  - Percent of Estates Closed
  - Percent of qualifying probate orders encoded within 72 hours
  - Percent of qualifying non-probate conveyance documents, including deeds, recorded within 48 hours
  - Percent of land titles certified within 48 hours
  - Percent of recipients who complete the goals identified in the Individual Self-sufficiency Plans (Welfare Assistance Program)
  - Percent of Indian Child Welfare Act notices processed within 15 days of receipt
  - The number of jobs created by the job placement services program (JPT) from tribes that submitted PL 102-477 reports.
- **Maintain critical infrastructure and facilities to ensure effective operations and service delivery**
  - Cost per mile of BIA owned roads maintained in acceptable condition
  - Percent of law enforcement detention facilities that are in acceptable condition as measured by the Facilities Condition Index

# Reference

FY 2018-2022 Strategic Plan

<https://www.doi.gov/sites/doi.gov/files/uploads/fy2018-2022-strategic-plan.pdf>