



# USET Area Seasonal Influenza Report

Report sent biweekly on Wednesday

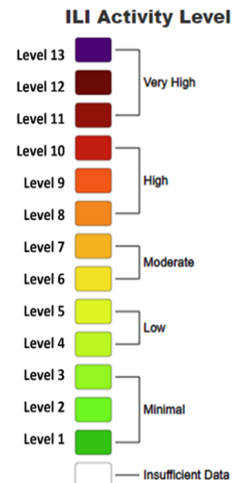
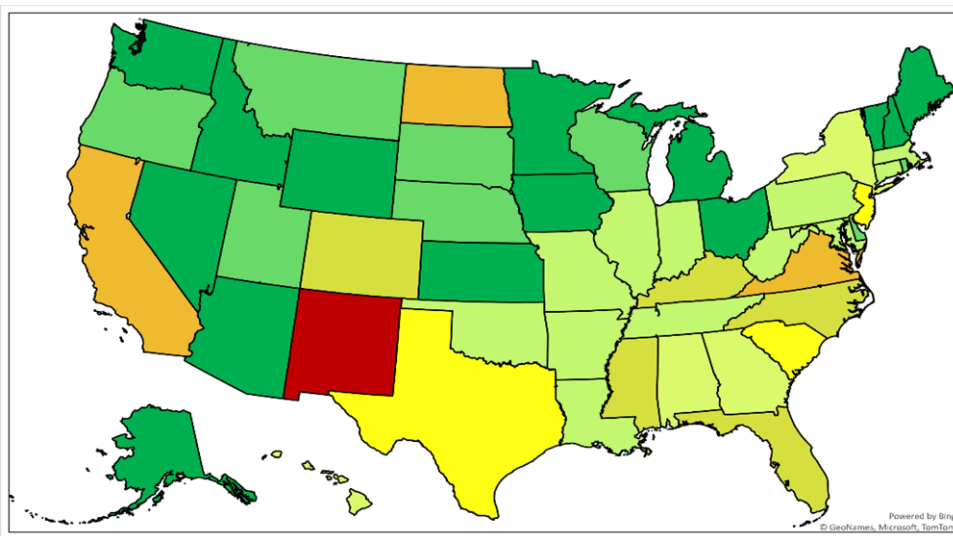
February 22, 2023

Morbidity & Mortality Weekly Report (MMWR) Week # 6 (2/5/2023 - 2/11/2023)

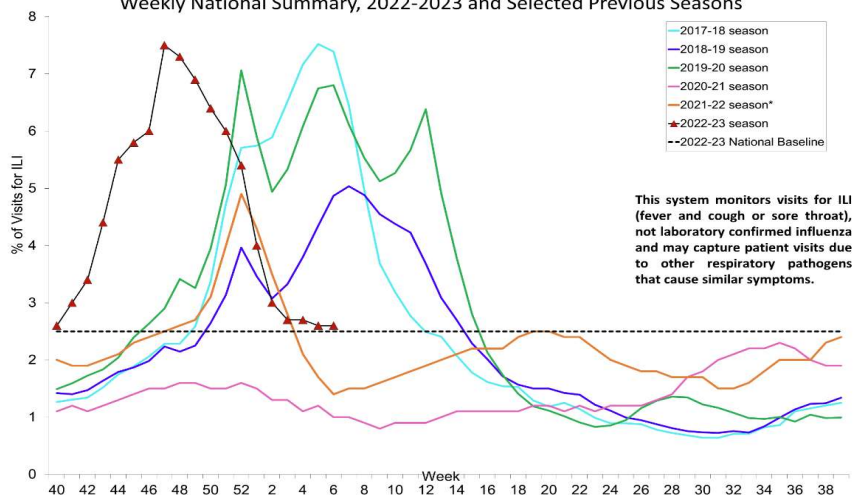
## Difference in Influenza Activity

	MMWR # 6	Difference from MMWR # 5	
Percentage of Influenza Positive Tests Reported to CDC :	1.3 %	-0.4 %	↓
Weighted Percentage of Visits for Influenza Like Illness Reported by ILI Net:	2.6 %	0.0 %	↔
Number of New Influenza Hospital Admissions Reported to HHS Protect:	1,992	-191	↓
Percentage ILI Visits for National Indian Health Service (IHS):	1.2 %	-0.1 %	↓
Percentage ILI Visits for IHS Nashville Area:	2.2 %	0.0 %	↔

## Influenza Like Illness Activity Level by State & Season

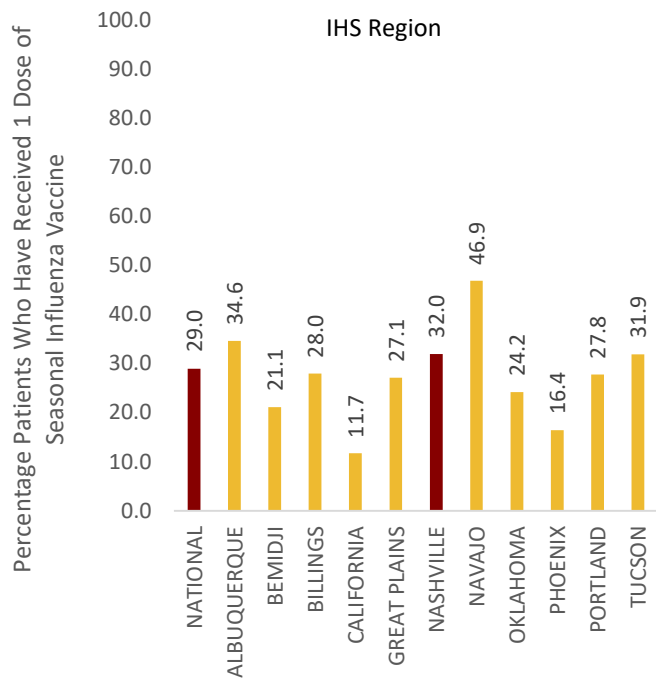


Percentage of Outpatient Visits for Respiratory Illness Reported By The U.S. Outpatient Influenza-like Illness Surveillance Network (ILINet), Weekly National Summary, 2022-2023 and Selected Previous Seasons



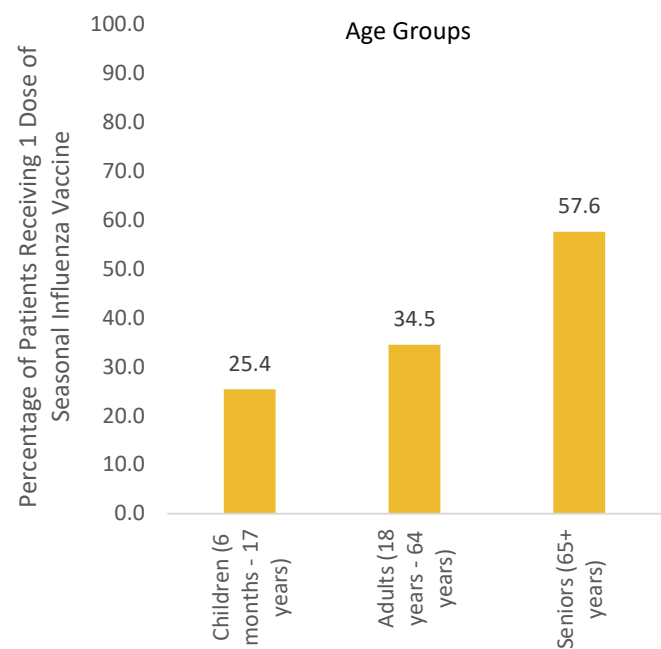
Data Source: <https://www.cdc.gov/flu/weekly/usmap.htm>

## Seasonal Influenza Vaccination by IHS Region



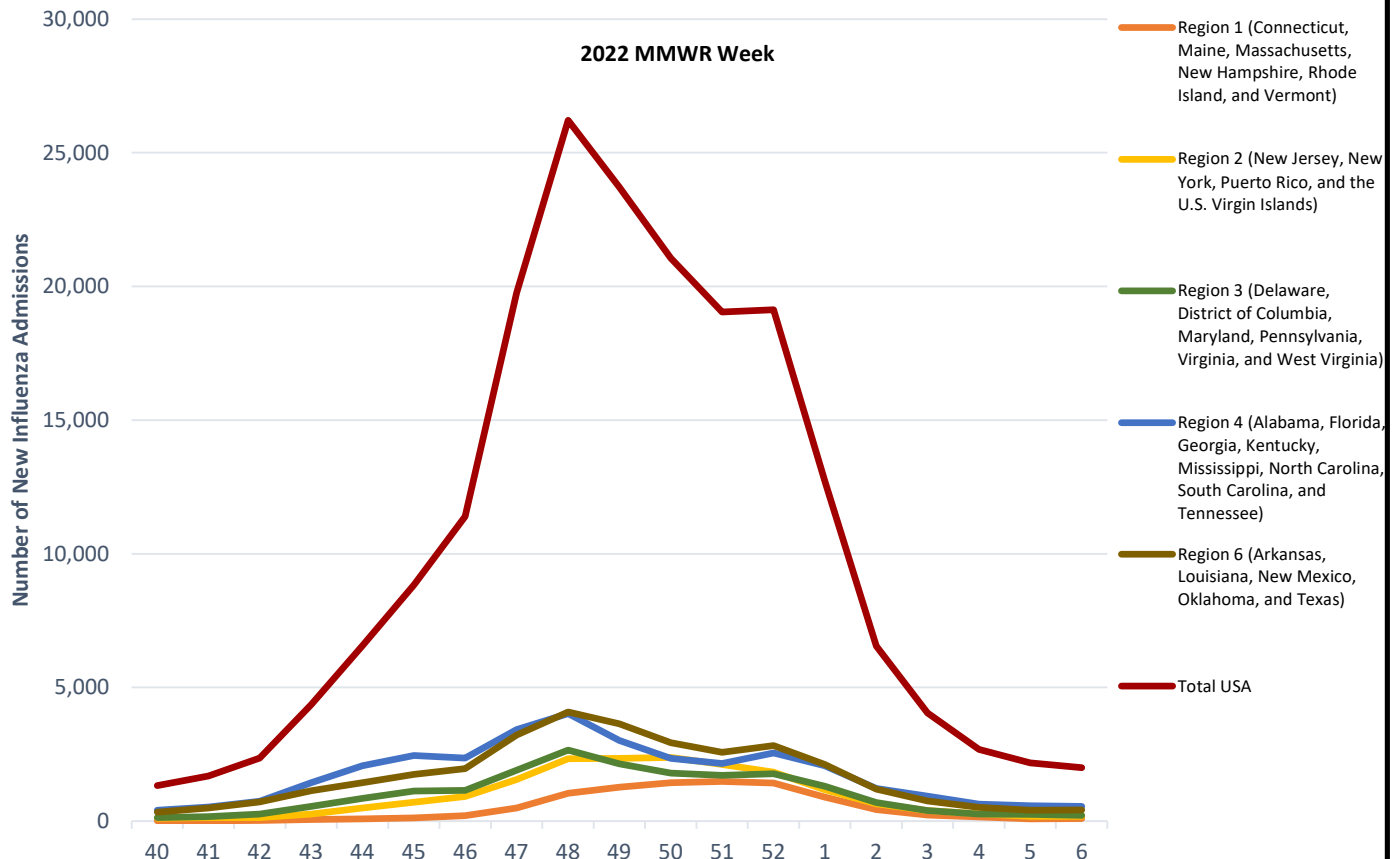
Data Source: IHS Weekly Influenza Report

## Nashville Area Seasonal Influenza Vaccination by Age Group



Data Source: IHS Weekly Influenza Report

## Number of New Hospital Admissions by HHS Protect Region



Data Source: <https://www.cdc.gov/flu/weekly/index.htm#HHSProtect>