



USET Area Seasonal Influenza Report

Report sent weekly on Wednesday

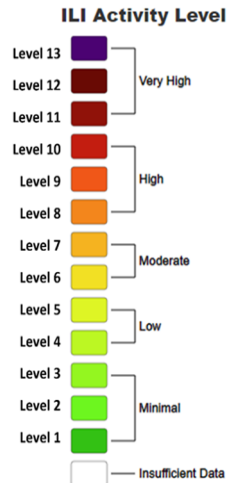
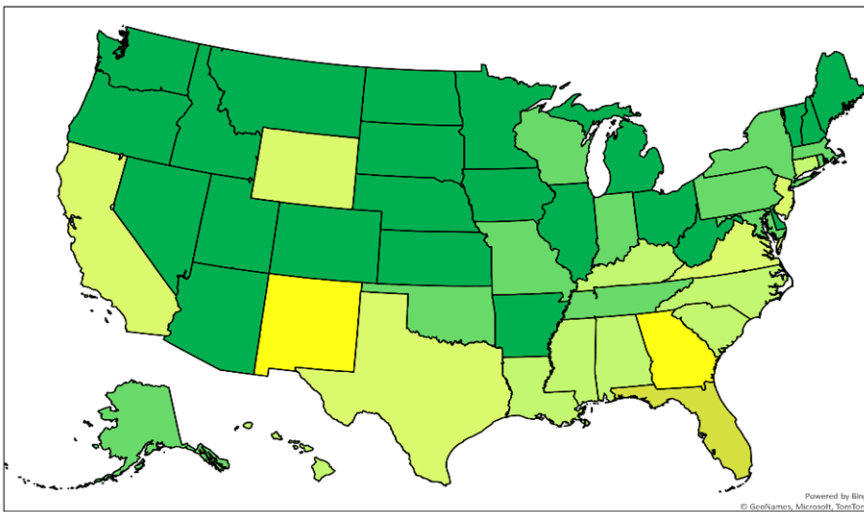
October 11, 2023

Morbidity & Mortality Weekly Report (MMWR) Week # 39 (9/24/2023 - 9/30/2023)

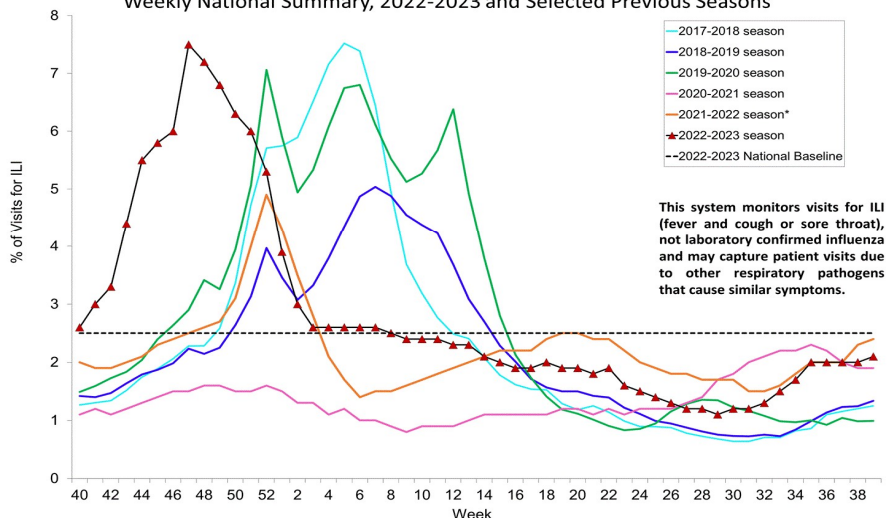
Difference in Influenza Activity

	MMWR # 39	Difference from MMWR # 38	
Percentage of Influenza Positive Tests Reported to CDC :	0.95 %	0.03 %	↑
Weighted Percentage of Visits for Influenza Like Illness Reported by ILI Net:	2.10 %	0.10 %	↑
Number of New Influenza Hospital Admissions Reported to NHSN:	1,040	144	↑
Percentage ILI Visits for National Indian Health Service (IHS):	0.70 %	-0.10 %	↓
Percentage ILI Visits for IHS Nashville Area:	1.00 %	-0.40 %	↓

Influenza Like Illness Activity Level by State & Season

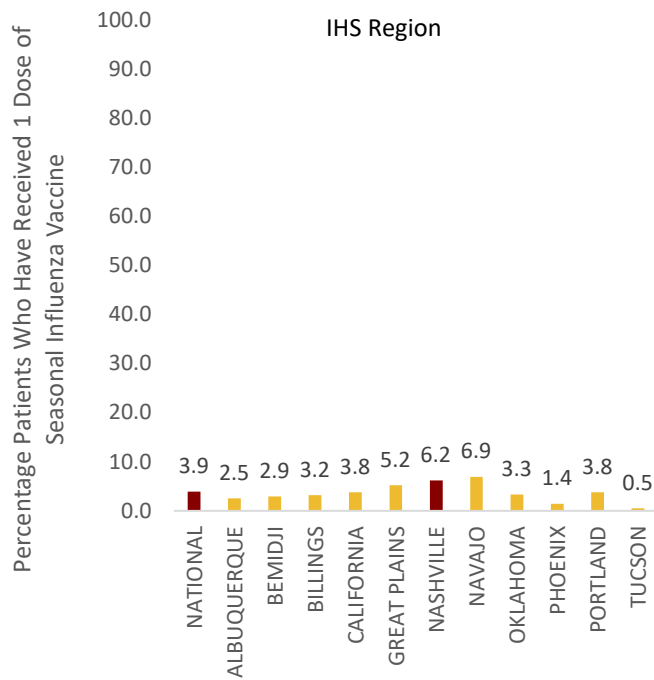


Percentage of Outpatient Visits for Respiratory Illness Reported by The U.S. Outpatient Influenza-like Illness Surveillance Network (ILINet), Weekly National Summary, 2022-2023 and Selected Previous Seasons



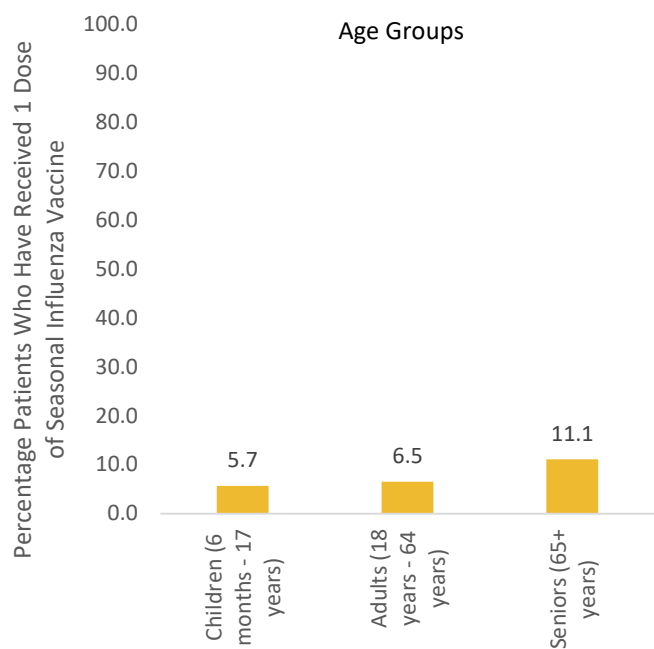
Data Source: <https://www.cdc.gov/flu/weekly/usmap.htm>

Seasonal Influenza Vaccination by IHS Region



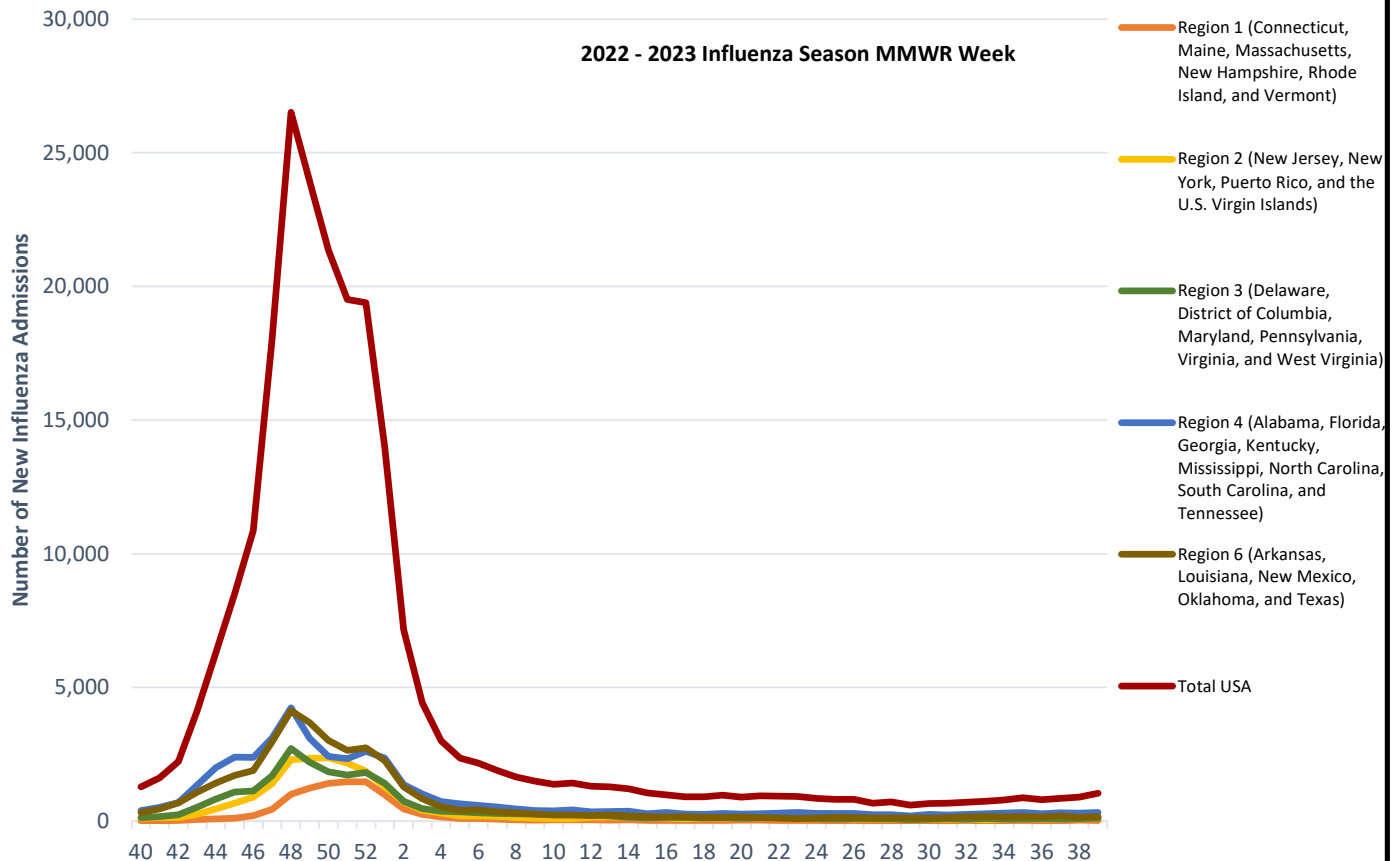
Data Source: IHS Weekly Influenza Report

Nashville Area Seasonal Influenza Vaccination by Age Group



Data Source: IHS Weekly Influenza Report

Number of New Hospital Admissions by HHS Protect Region



Data Source: <https://www.cdc.gov/flu/weekly/index.htm#HHSProtect>