



BOEM Bureau of
Ocean Energy Management

Outer Continental Shelf (OCS) Renewable Energy

United South and Eastern Tribes (USET)
Sovereignty Protection Fund

October 23, 2023

Karen Baker

Chief, Office of Renewable Energy Programs

Renewable Energy Leasing Process: From RFI/Call to Operation

[Planning & Analysis]

[Leasing]

[Site Assessment]

[Construction & Operations]

Initiate Leasing Process (RFI/Call)

Lease Granted

Submit SAP

BOEM Deems COP Complete & Sufficient

BOEM Approves COP



Area Identification
Wind Energy Areas

Publish Leasing Notices

Pre-survey Meetings/Plan

Site Assessment & Surveys
(maximum timeframe)

BOEM Environmental & Technical Reviews

Installation

0 ——— ~1/2

0 ——— <1 1/2

0

1

0

<5

0

2

NEPA/Environmental Reviews



Auction



BOEM Reviews & Approves SAP



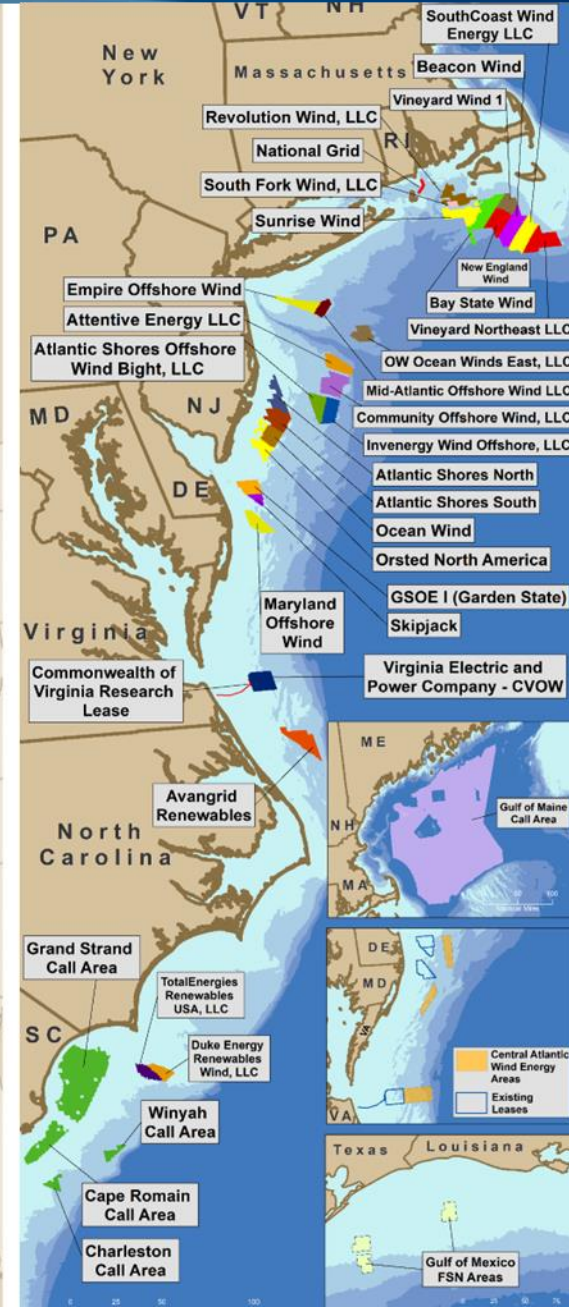
Submit COP
(with Project Design Envelope – optional)



Submit Design & Installation Plans

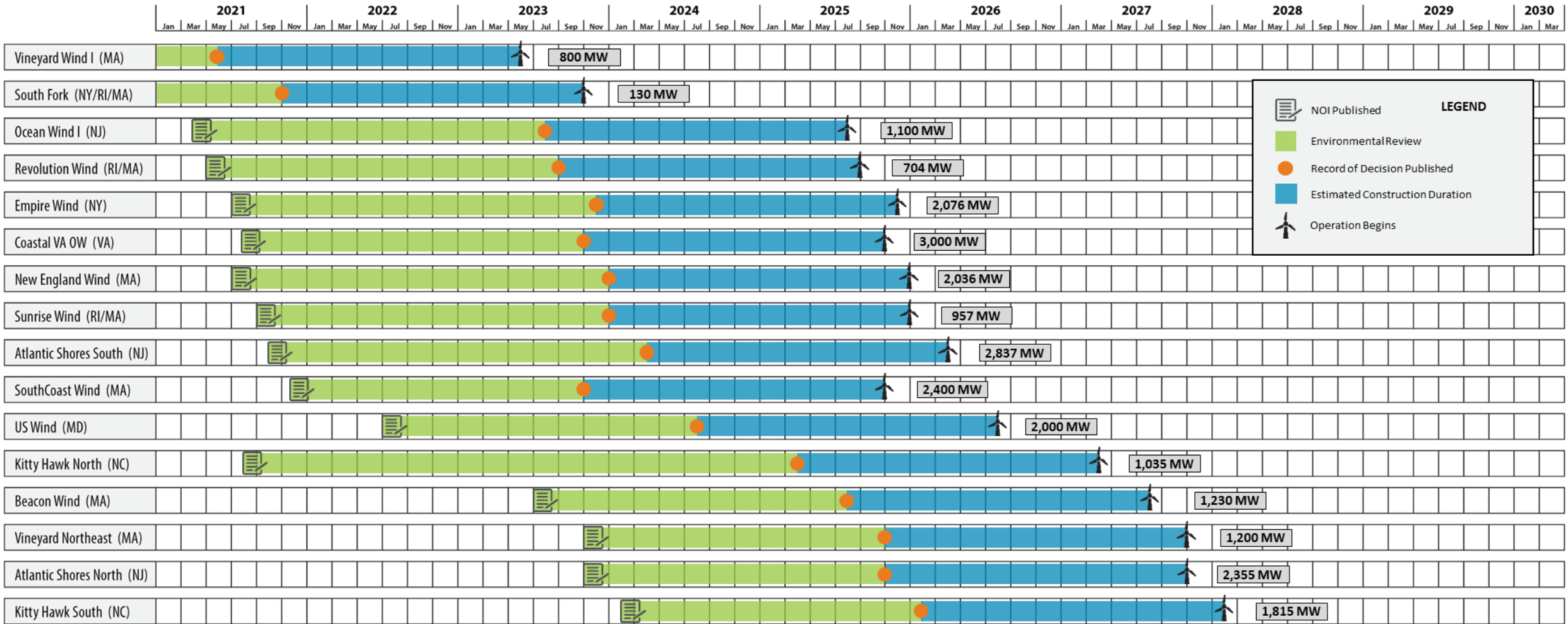


Renewable Energy Program by the Numbers



Atlantic Construction & Operations Plan Timeline

Construction completion dates are estimated by adding 2 years to Record of Decision Published date.



LEGEND

- NOI Published
- Environmental Review
- Record of Decision Published
- Estimated Construction Duration
- Operation Begins

* The above Construction and Operations Plan (COP) timelines reflect the FAST-41 Permitting Dashboard dates and most recent approved schedule adjustments. NOTE: SouthCoast Wind schedule adjustment is still in process.



BOEM Funds Indefinite Delivery/Indefinite Quantity (IDIQ): Supporting Tribal Reviews

Responding to Tribal Government Requests

Tribal governments requested to strengthen capacity for review of offshore wind-related documents, the **Office of Renewable Energy Programs (OREP)** has issued an Indefinite Delivery/Indefinite Quantity (IDIQ) contract to three Indian Small Business Economic Enterprises to facilitate Tribes' review of the Bureau of Ocean Energy Management's (BOEM) environmental documents.



BOEM

Bureau of Ocean Energy
Management

BOEM.gov



Karen Baker, karen.baker@boem.gov