



USET Area Seasonal Respiratory Illnesses Report

Report Sent Weekly on Thursday

January 19, 2023

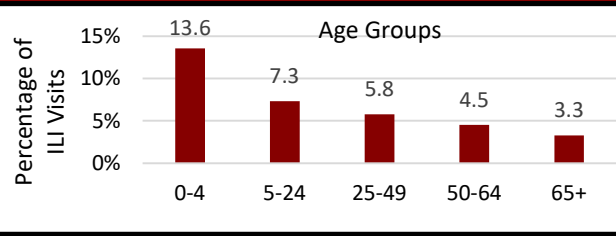
Current MMWR Week # 1 (12/31/2023 - 01/06/2024)

Influenza Like Illness (ILI)

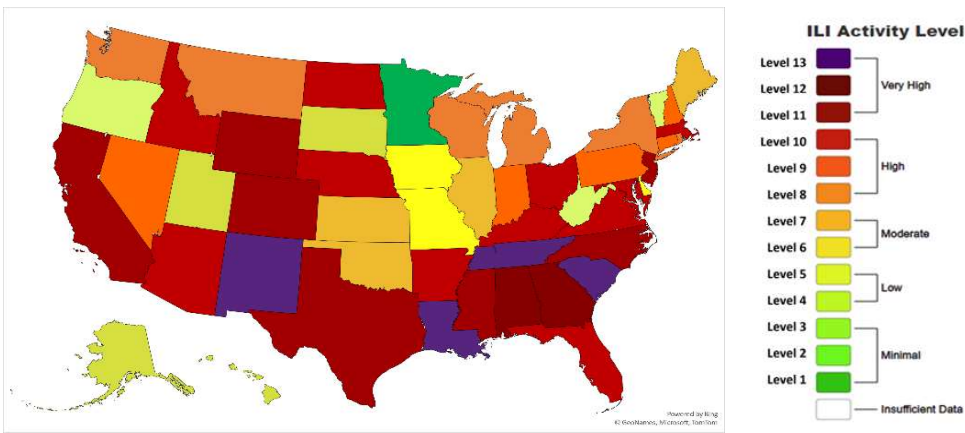
Percentage of IHS ILI Visits

	This Week	Last Week Difference
National IHS %	3.80	-1.90 ↓
Nashville Area IHS %	5.80	-6.10 ↓

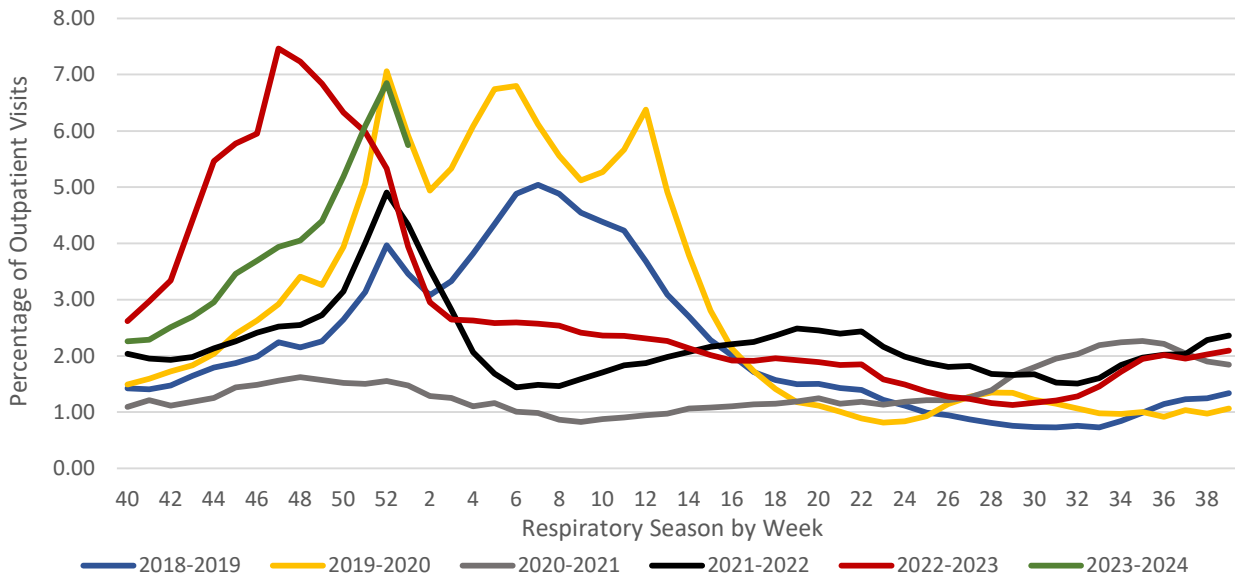
Percentage of ILI Visits by Age



Influenza Like Illness Activity Level by State

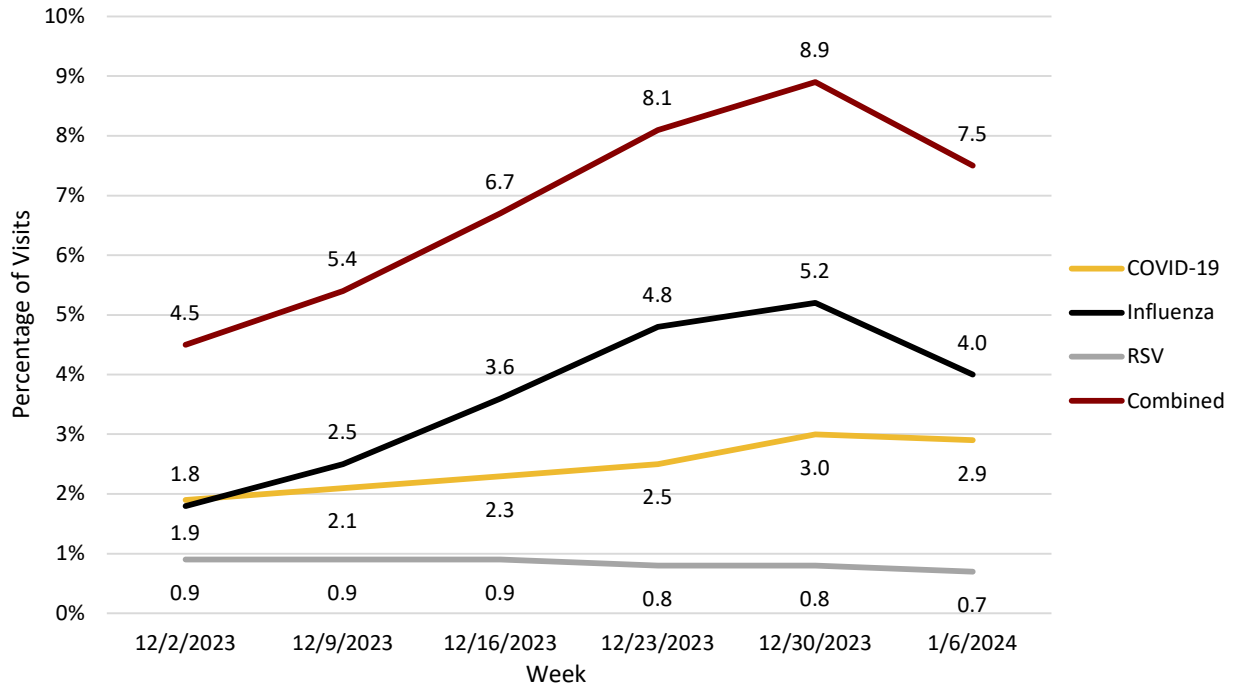


Percentage of Outpatient Visits for Respiratory Illness Reported by ILINet

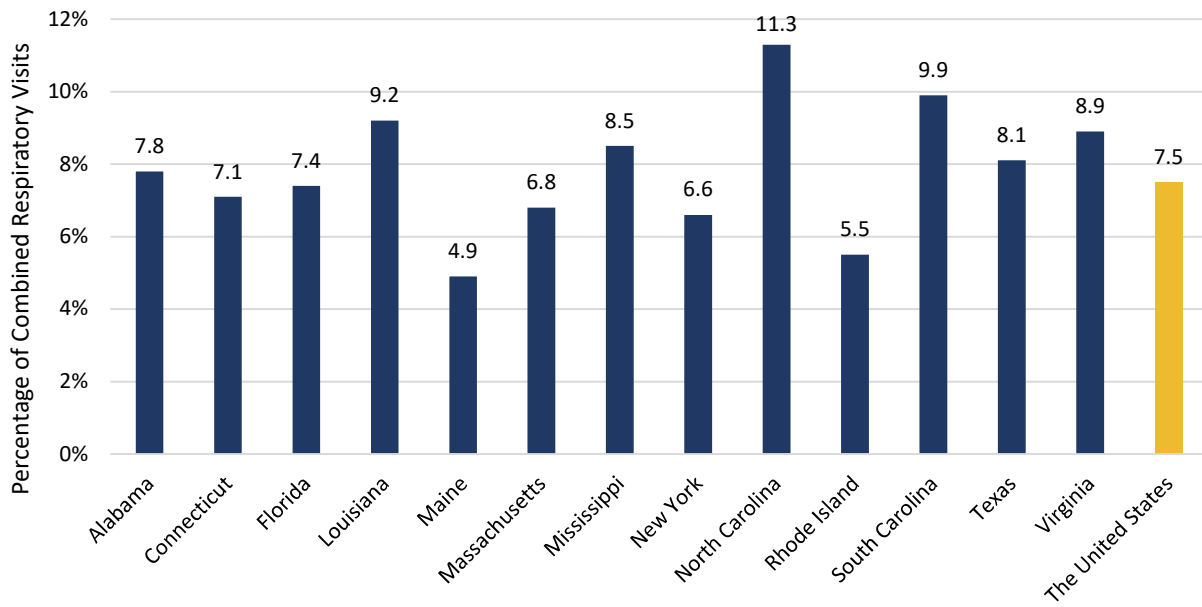


COVID- 19, Influenza, & Respiratory Syncytial Virus (RSV)

The United States Percentage of Visits for Respiratory Diseases by Week

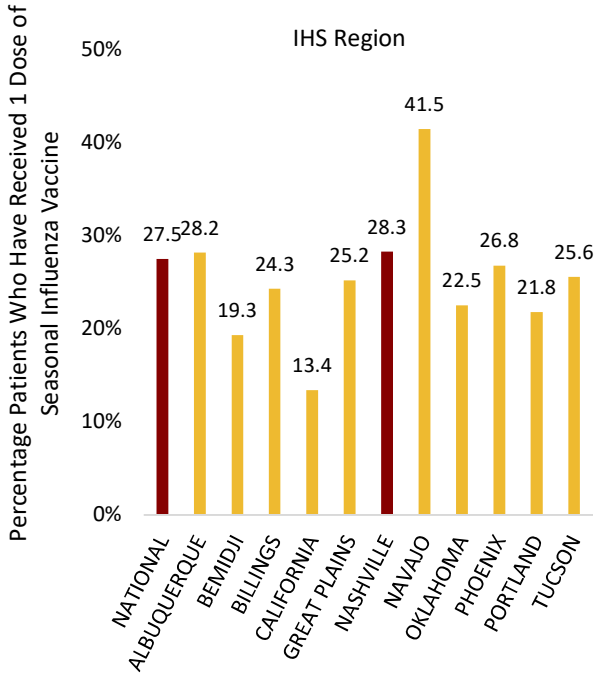


Percentage of Respiratory Visits by USET States

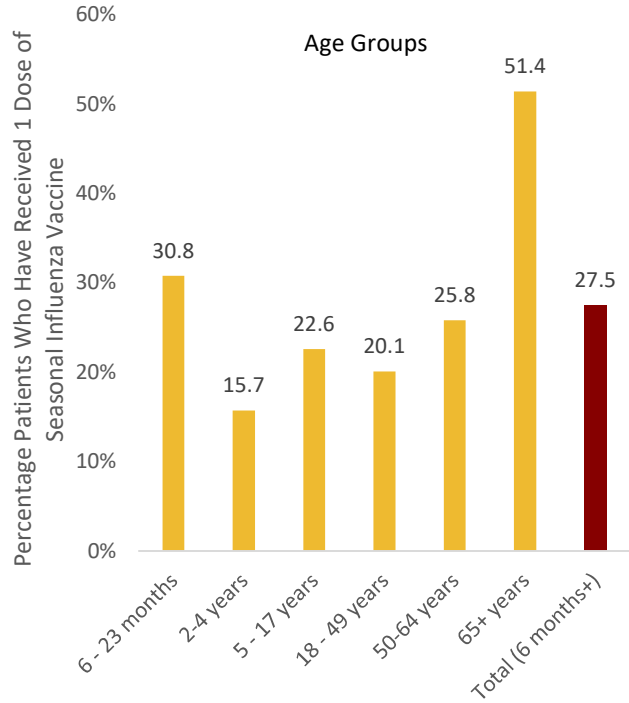


Influenza

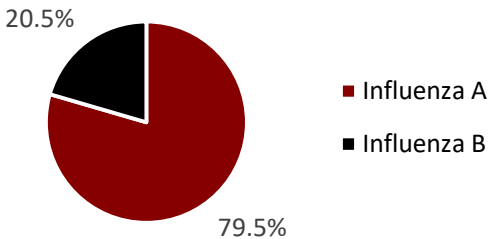
Seasonal Influenza Vaccination Percentage by IHS Region



National IHS Seasonal Influenza Vaccination Percentage by Age Group



Percentage of Positive Influenza Specimens by Type for Clinical Laboratories



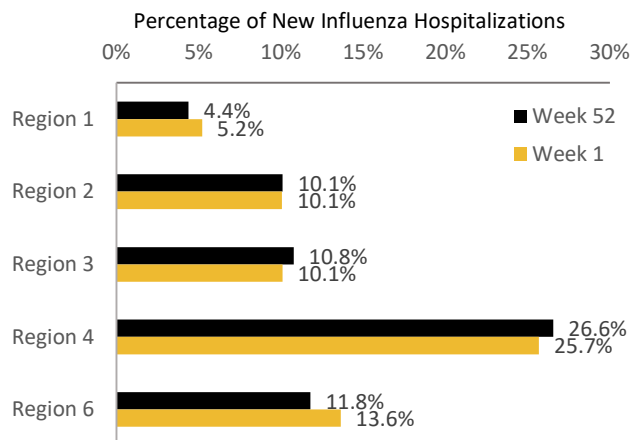
IHS Nashville Area Seasonal Influenza Vaccination Percentage by Age Group

Children (6 months - 17 years)	22.6%
Seniors (65+ years)	55.3%

Number of New Hospital Admissions with Influenza by HHS Region

Week #	52	1
Region 1	913	963
Region 2	2,108	1,866
Region 3	2,245	1,870
Region 4	5,541	4,758
Region 6	2,459	2,524
Total USA	20,860	18,526

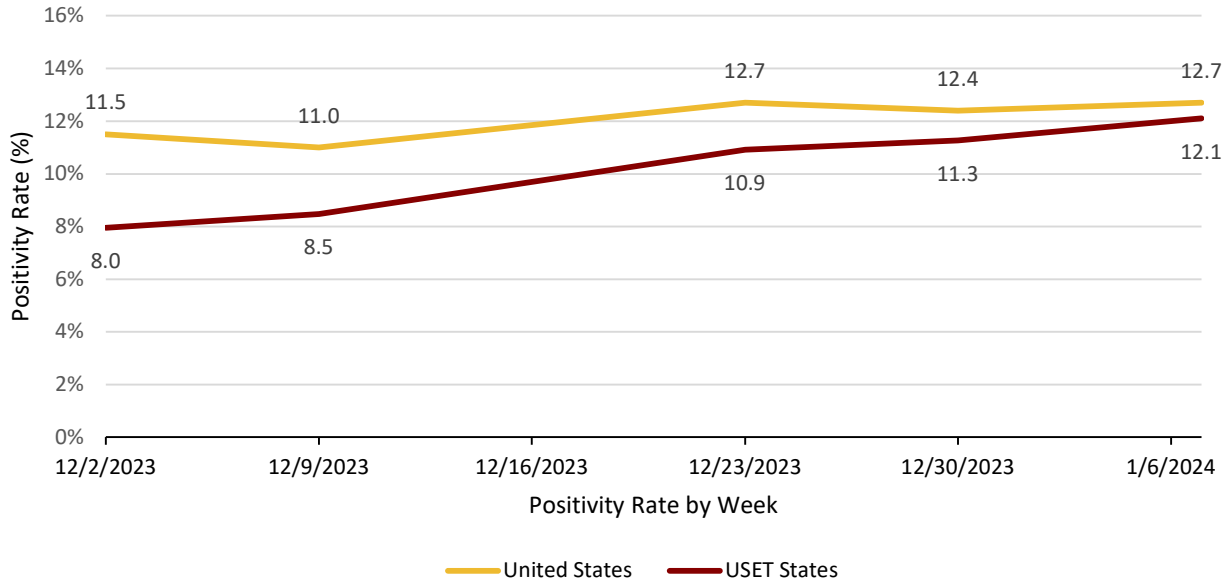
Percentage of New Influenza Hospitalizations by Week by HHS Region



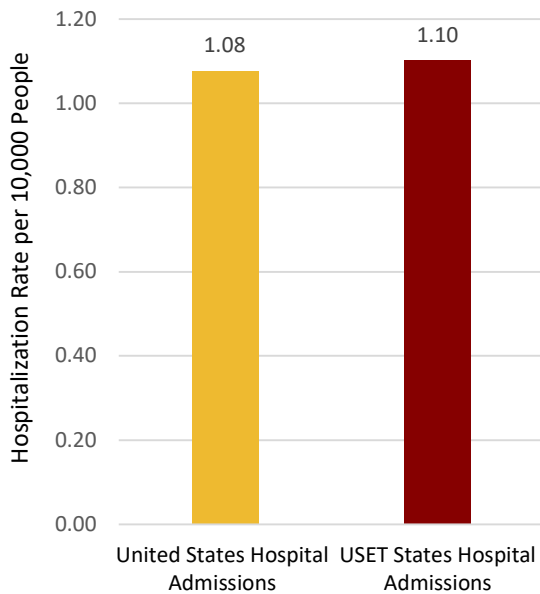
COVID- 19

COVID-19 Variants of Concern (>5% Total): Omicron Lineage: JN.1, HV.1

Weekly COVID-19 Case Positivity Rate (%) by United States and USET States



Weekly COVID-19 Hospitalization Rate per 10,000 People



Weekly Number of COVID-19 Hospitalizations

