



# USET Area Seasonal Respiratory Illnesses Report

Report Sent Weekly on Thursday

February 1, 2023

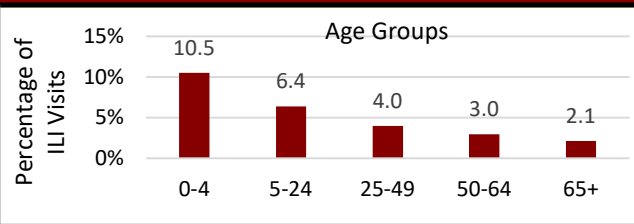
Current MMWR Week # 3 (01/14/2023 - 01/20/2024)

## Influenza Like Illness (ILI)

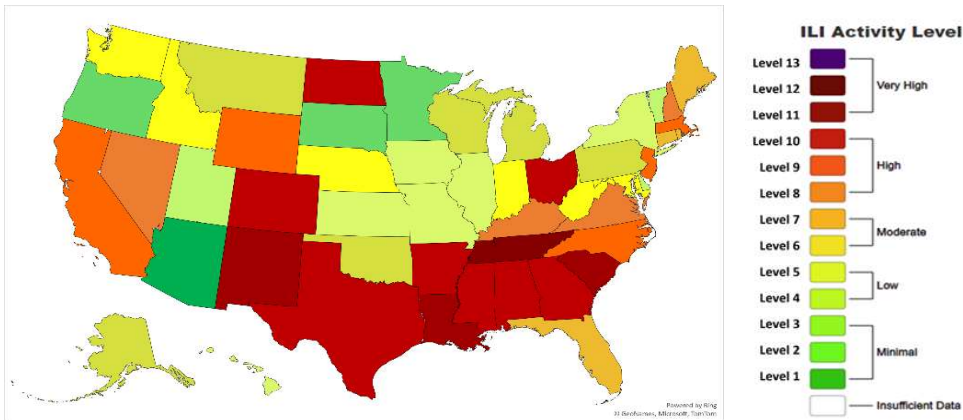
### Percentage of IHS ILI Visits

	This Week	Last Week Difference
National IHS %	4.50	0.50 ↑
Nashville Area IHS %	6.10	0.70 ↑

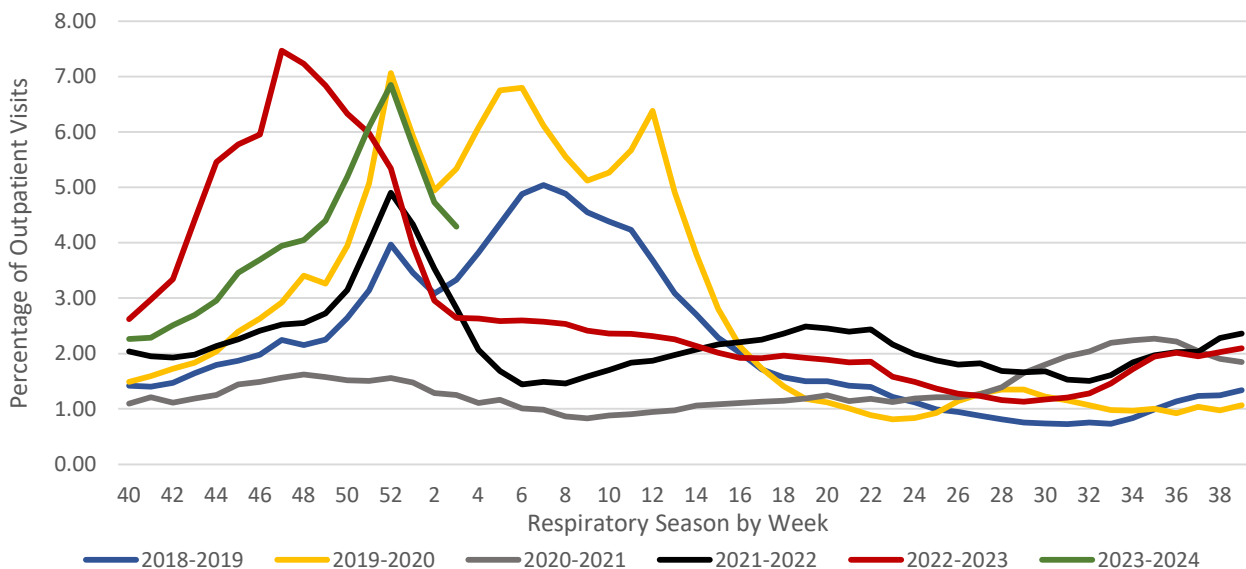
### Percentage of ILI Visits by Age



### Influenza Like Illness Activity Level by State

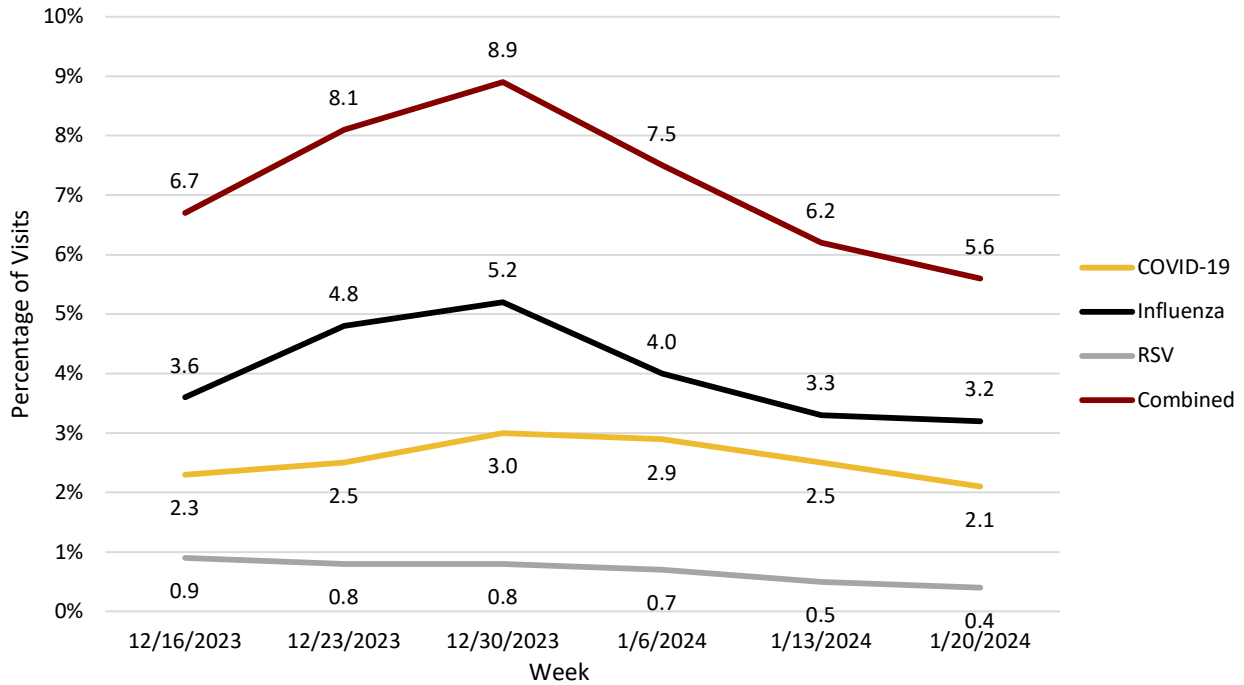


### Percentage of Outpatient Visits for Respiratory Illness Reported by ILINet

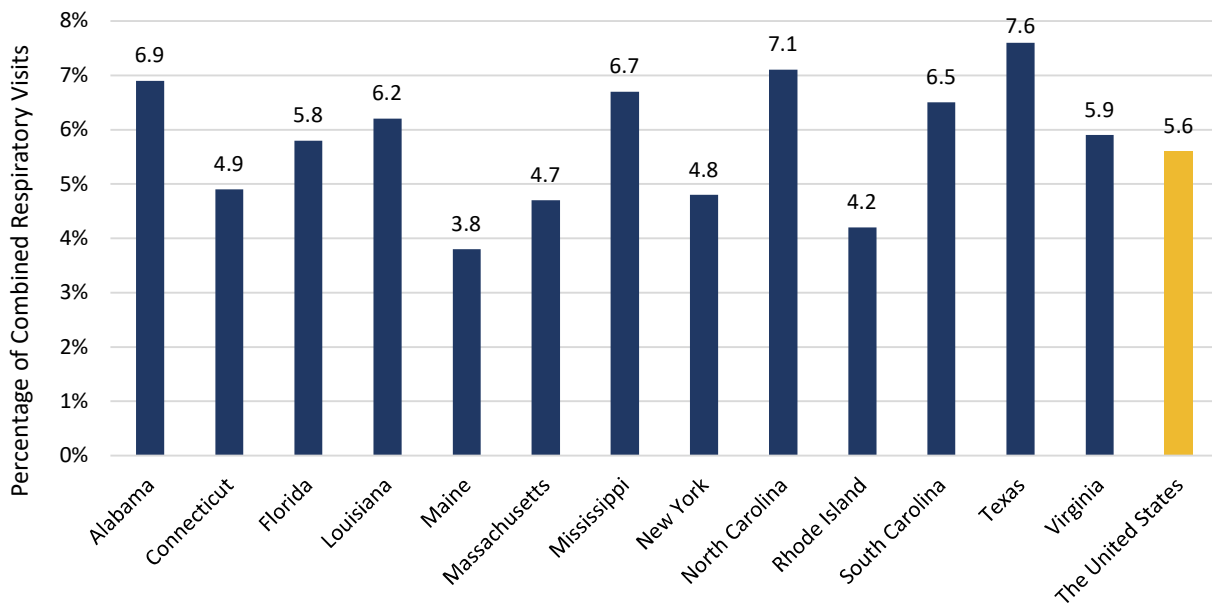


# COVID- 19, Influenza, & Respiratory Syncytial Virus (RSV)

## The United States Percentage of Visits for Respiratory Diseases by Week

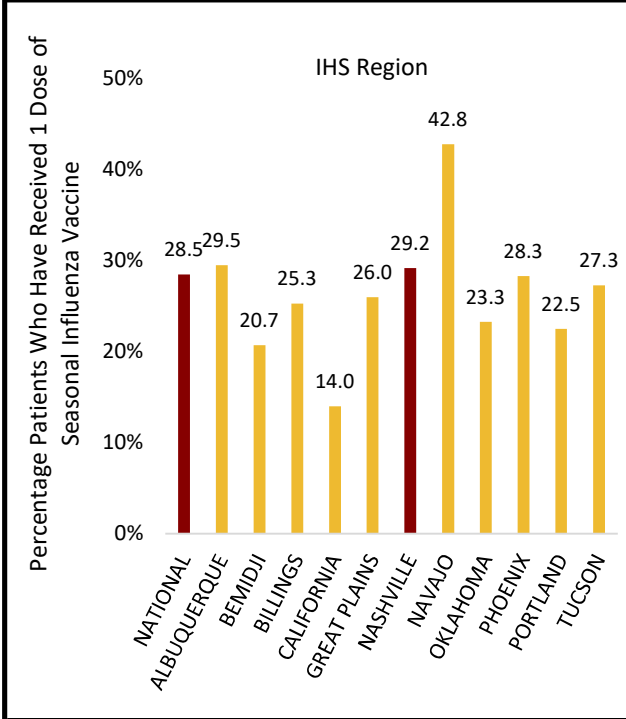


## Percentage of Respiratory Visits by USET States

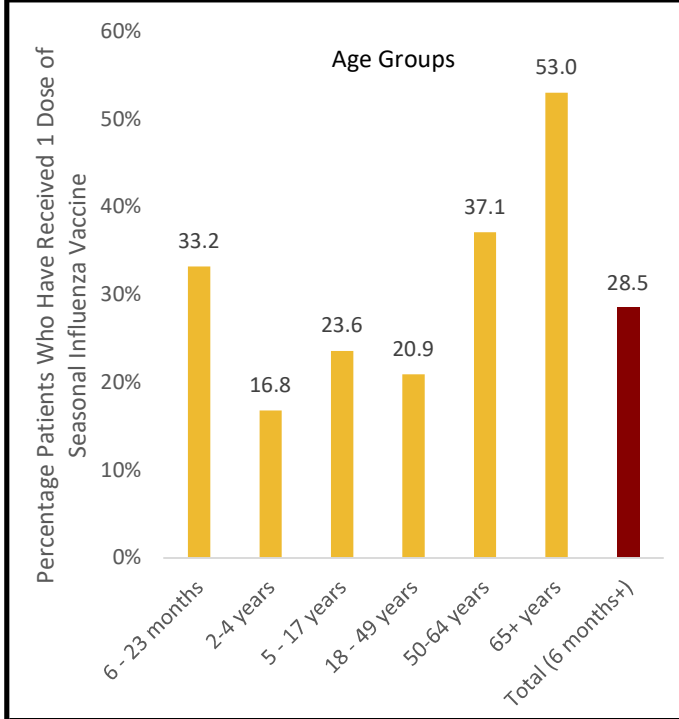


# Influenza

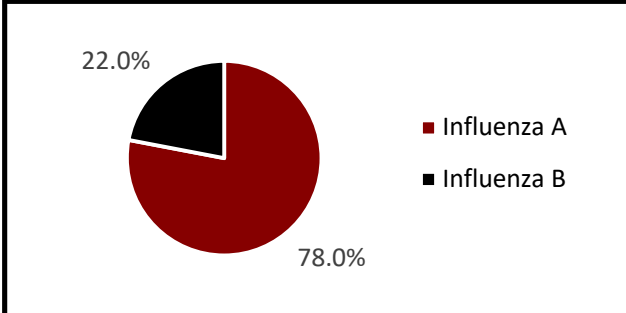
**Seasonal Influenza Vaccination Percentage by IHS Region**



**National IHS Seasonal Influenza Vaccination Percentage by Age Group**



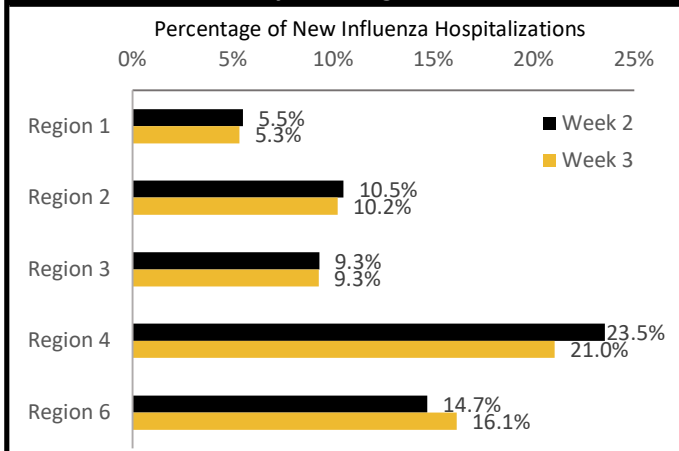
**Percentage of Positive Influenza Specimens by Type for Clinical Laboratories**



**IHS Nashville Area Seasonal Influenza Vaccination Percentage by Age Group**

<b>Children</b> (6 months - 17 years)	23.7%
<b>Seniors</b> (65+ years)	56.4%

**Percentage of New Influenza Hospitalizations by Week by HHS Region**



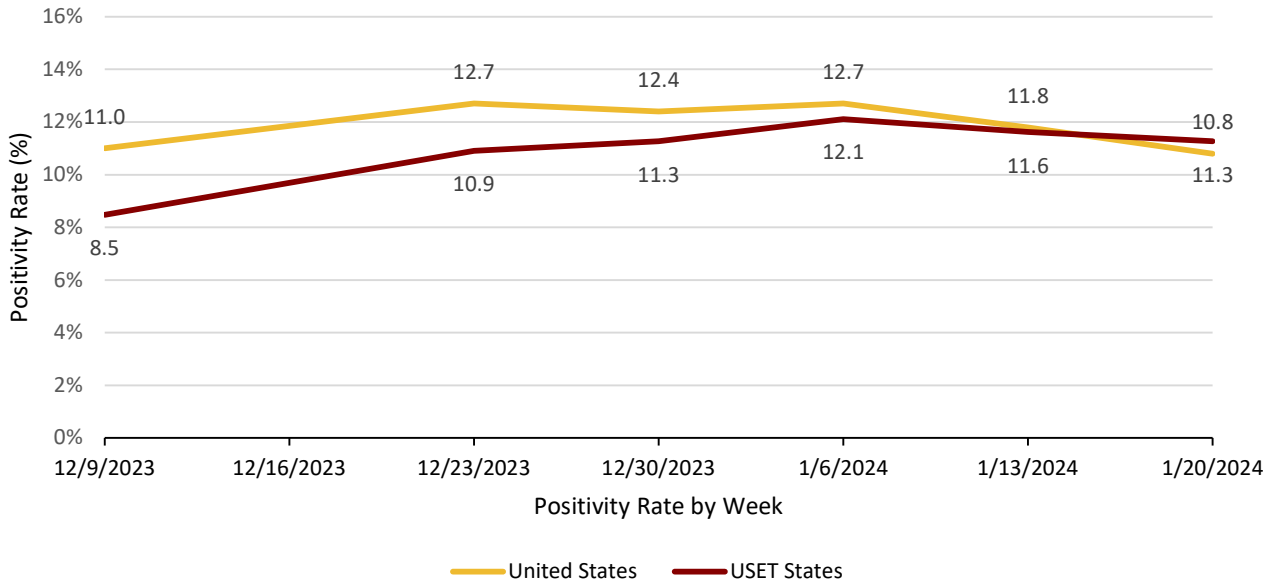
**Number of New Hospital Admissions with Influenza by HHS Region**

Week #	2	3
Region 1	829	659
Region 2	1,588	1,264
Region 3	1,405	1,148
Region 4	3,555	2,604
Region 6	2,219	1,999
<b>Total USA</b>	<b>15,111</b>	<b>12,382</b>

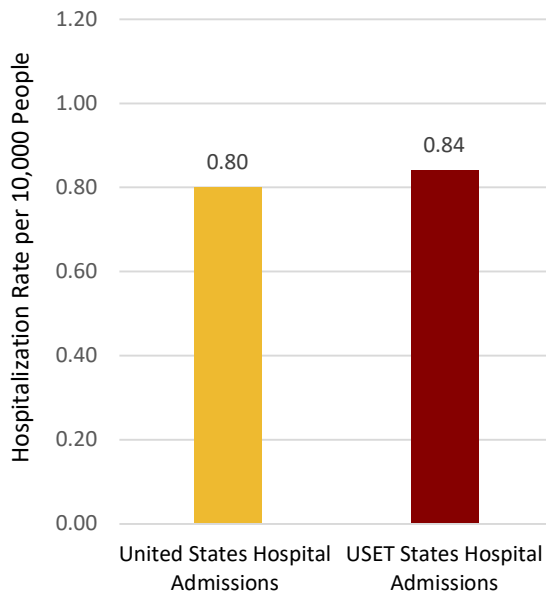
# COVID- 19

COVID-19 Variants of Concern (>5% Total): Omicron Lineage: JN.1, HV.1

## Weekly COVID-19 Case Positivity Rate (%) by United States and USET States



## Weekly COVID-19 Hospitalization Rate per 10,000 People



## Weekly Number of COVID-19 Hospitalizations

