



USET Area Seasonal Respiratory Illnesses Report

Report Sent Weekly on Thursday

February 8, 2024

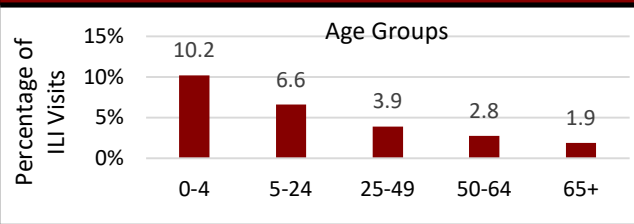
Current MMWR Week # 4 (01/21/2024 - 01/27/2024)

Influenza Like Illness (ILI)

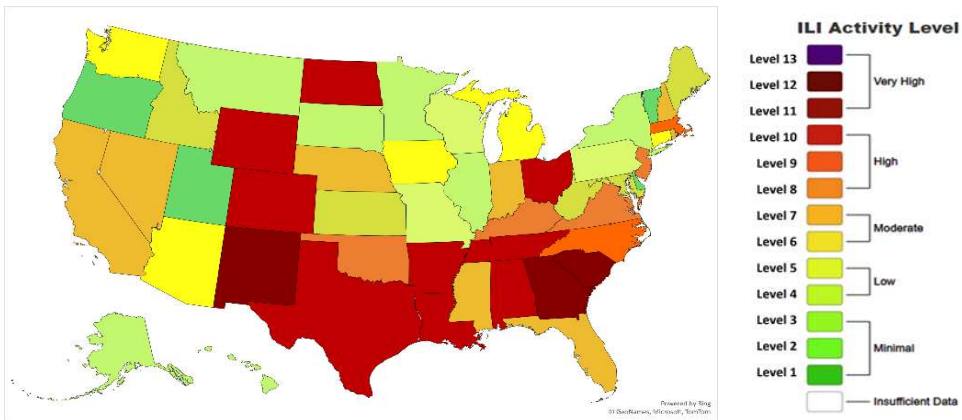
Percentage of IHS ILI Visits

	This Week	Last Week Difference
National IHS %	4.50	-0.20 ↓
Nashville Area IHS %	4.60	-1.90 ↓

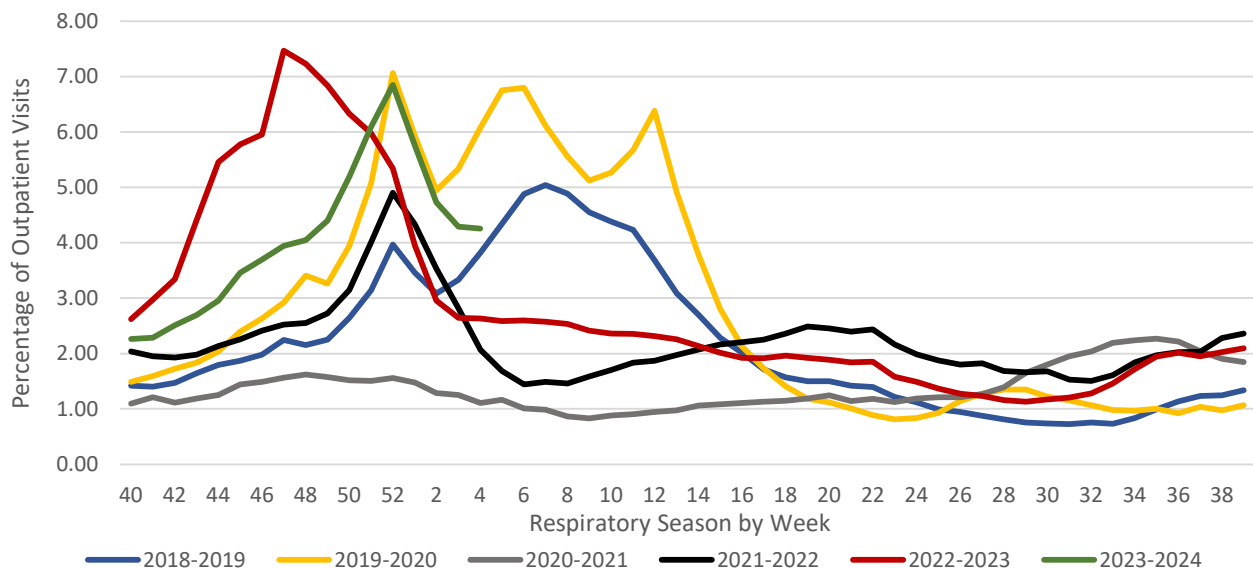
Percentage of ILI Visits by Age



Influenza Like Illness Activity Level by State

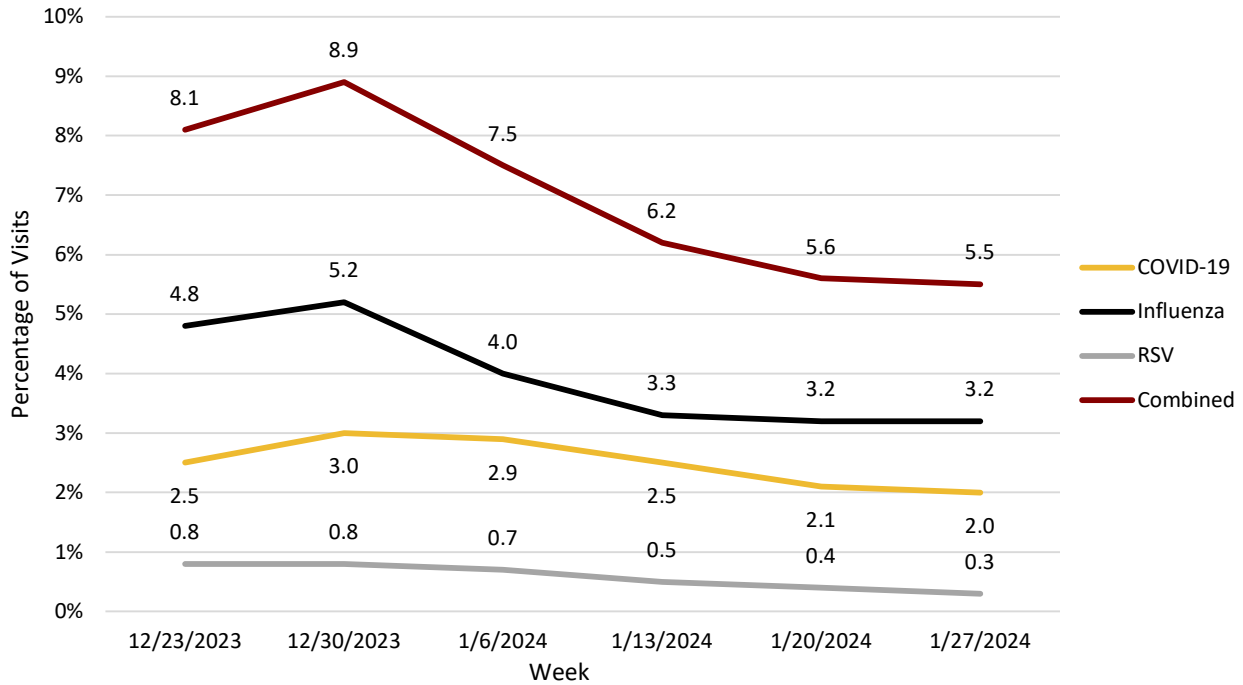


Percentage of Outpatient Visits for Respiratory Illness Reported by ILINet

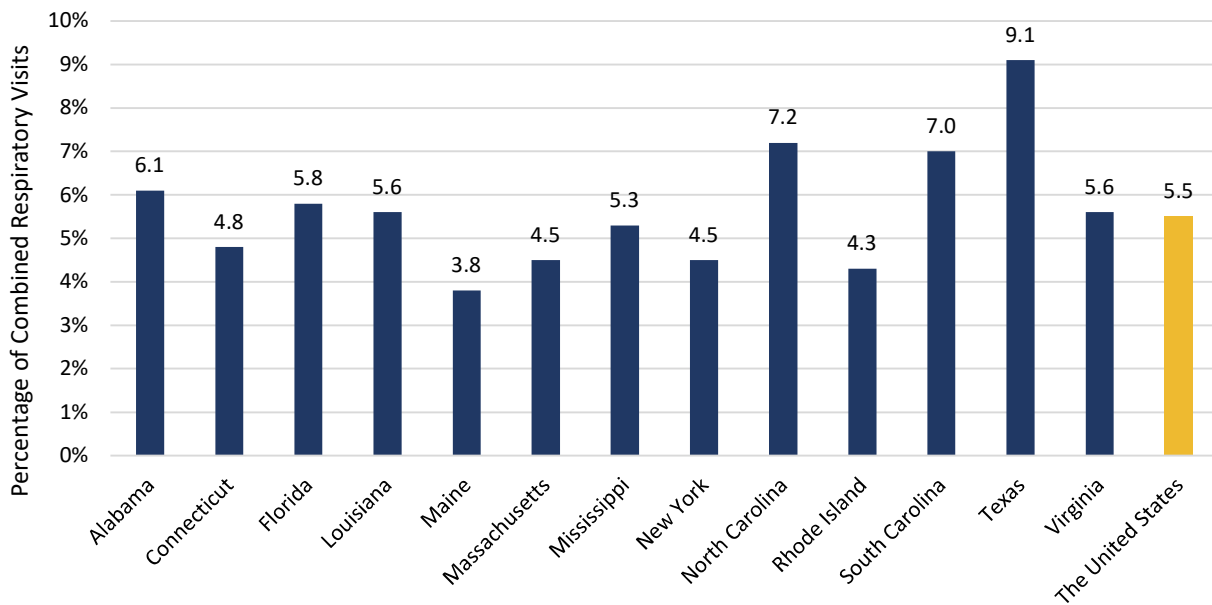


COVID- 19, Influenza, & Respiratory Syncytial Virus (RSV)

The United States Percentage of Visits for Respiratory Diseases by Week

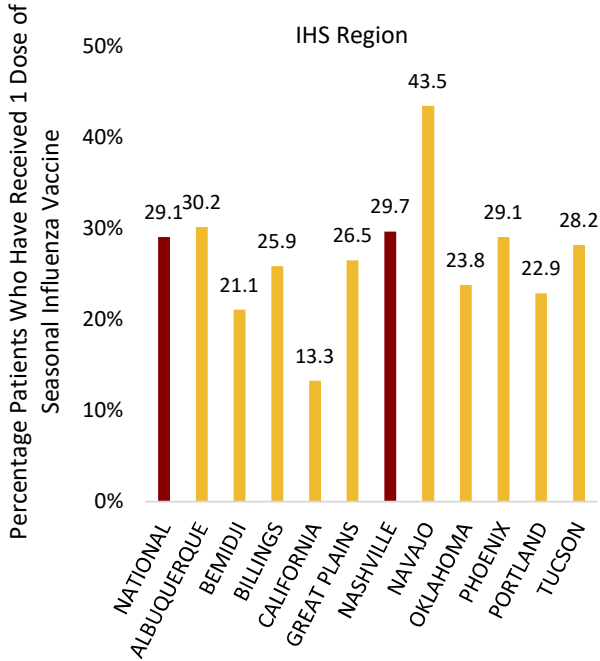


Percentage of Respiratory Visits by USET States

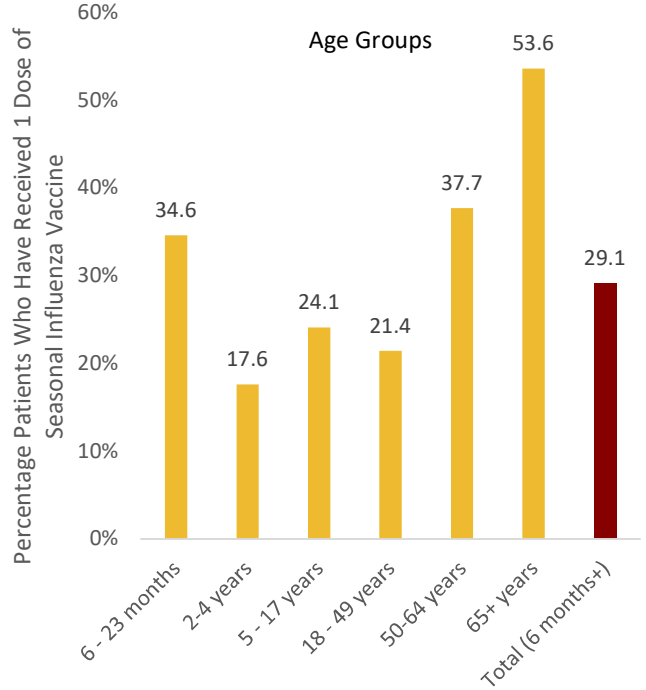


Influenza

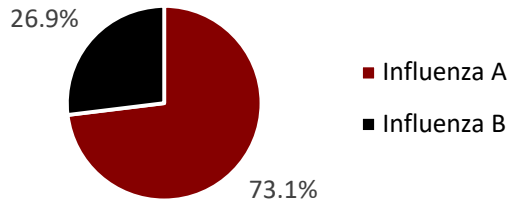
Seasonal Influenza Vaccination Percentage by IHS Region



National IHS Seasonal Influenza Vaccination Percentage by Age Group



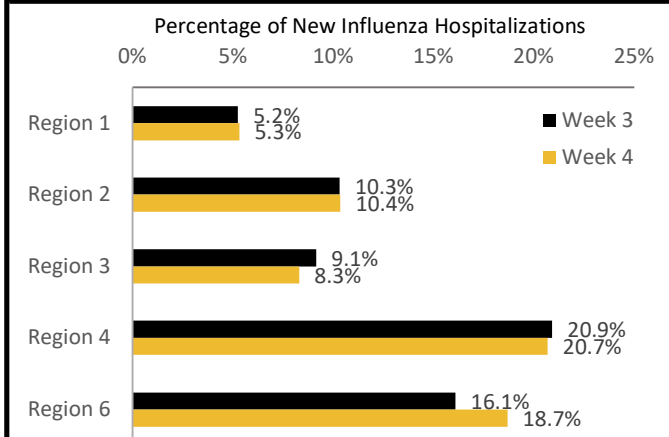
Percentage of Positive Influenza Specimens by Type for Clinical Laboratories



IHS Nashville Area Seasonal Influenza Vaccination Percentage by Age Group

Children (6 months - 17 years)	24.4%
Seniors (65+ years)	56.8%

Percentage of New Influenza Hospitalizations by Week by HHS Region



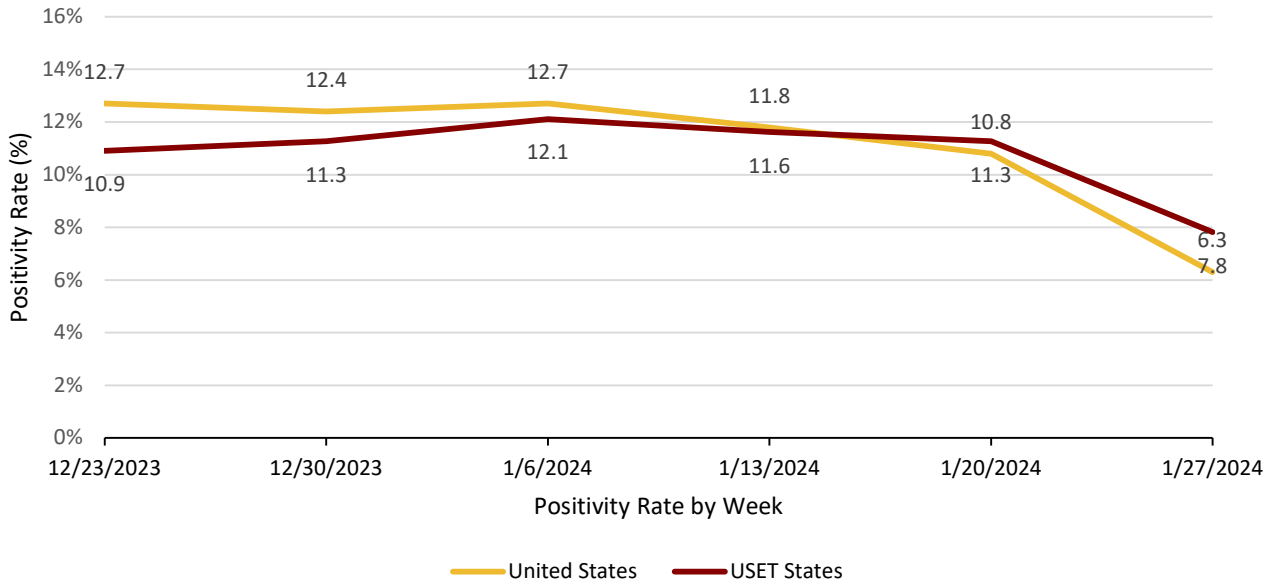
Number of New Hospital Admissions with Influenza by HHS Region

Week #	3	4
Region 1	659	648
Region 2	1,297	1,262
Region 3	1,149	1,011
Region 4	2,626	2,520
Region 6	2,021	2,276
Total USA	12,564	12,186

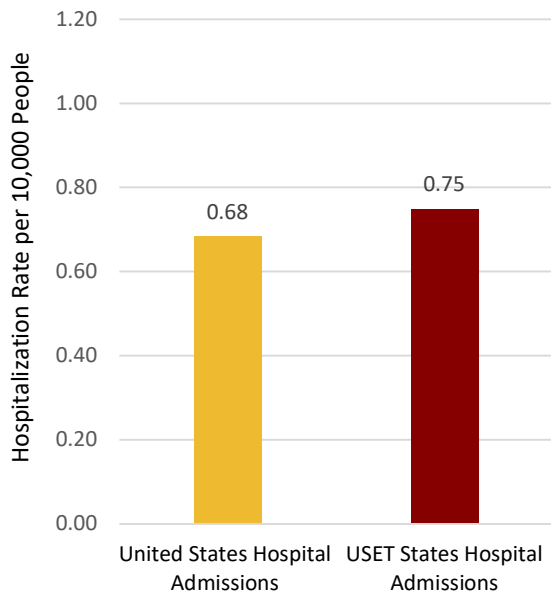
COVID- 19

COVID-19 Variants of Concern (>5% Total): Omicron Lineage: JN.1

Weekly COVID-19 Case Positivity Rate (%) by United States and USET States



Weekly COVID-19 Hospitalization Rate per 10,000 People



Weekly Number of COVID-19 Hospitalizations

