



All About Data

National and Regional Trends In Opioid Misuse

Tribal Epidemiology Center
United South and Eastern Tribes, Inc.

Prescription Opioids and Heroin: A Public Health Challenge*

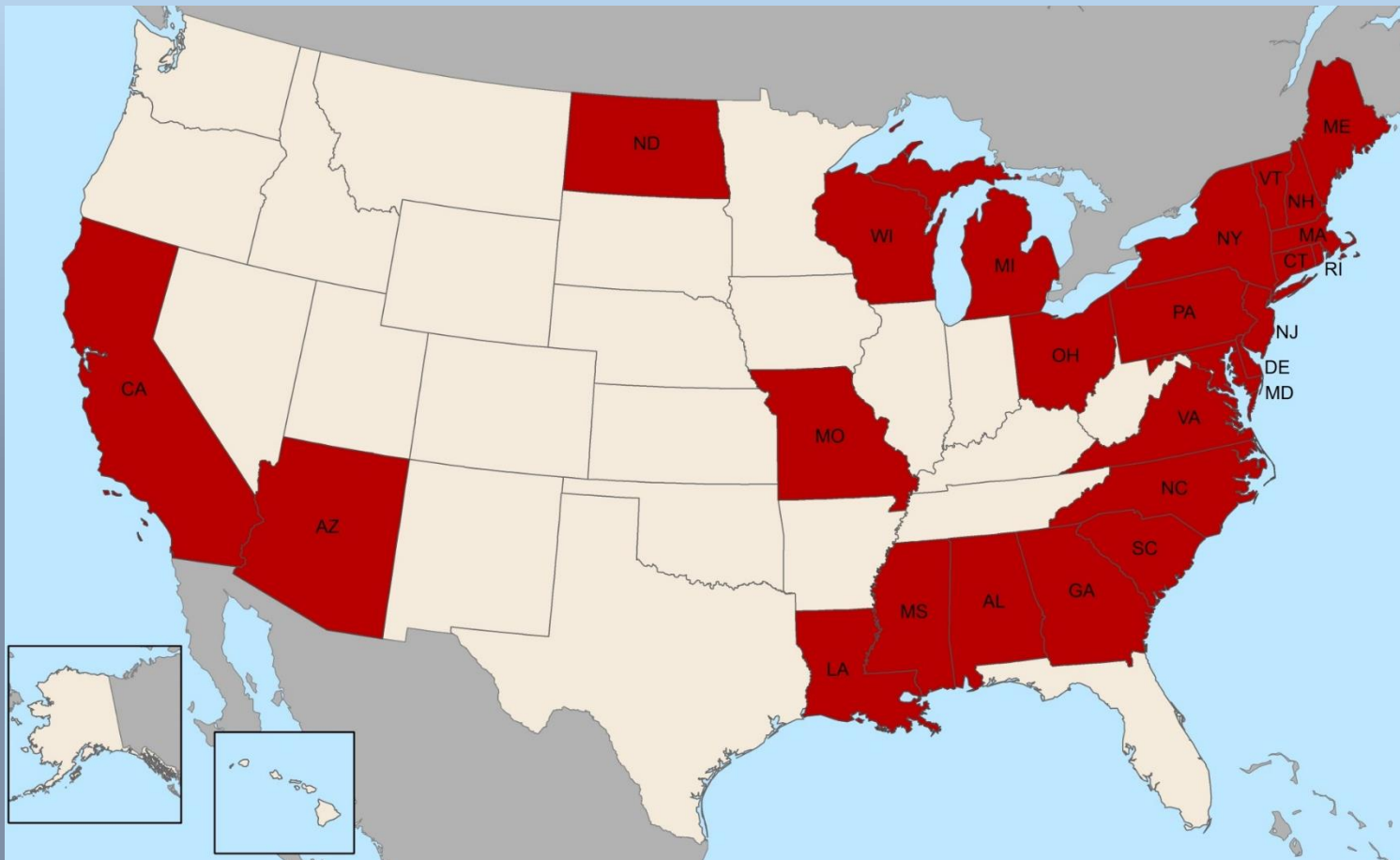


In 2014, 1.9 million people had a prescription opioid use disorder and nearly 600,000 had a heroin use disorder. The national data on overdose deaths are startling: in 2014, there were 28,647 overdose deaths involving prescription opioid medications and/or heroin.

**That is equivalent to an average of
one death every 18 minutes.**

*Data from Substance Abuse and Mental Health Services Administration (SAMHSA)

Fentanyl Deaths Across the US

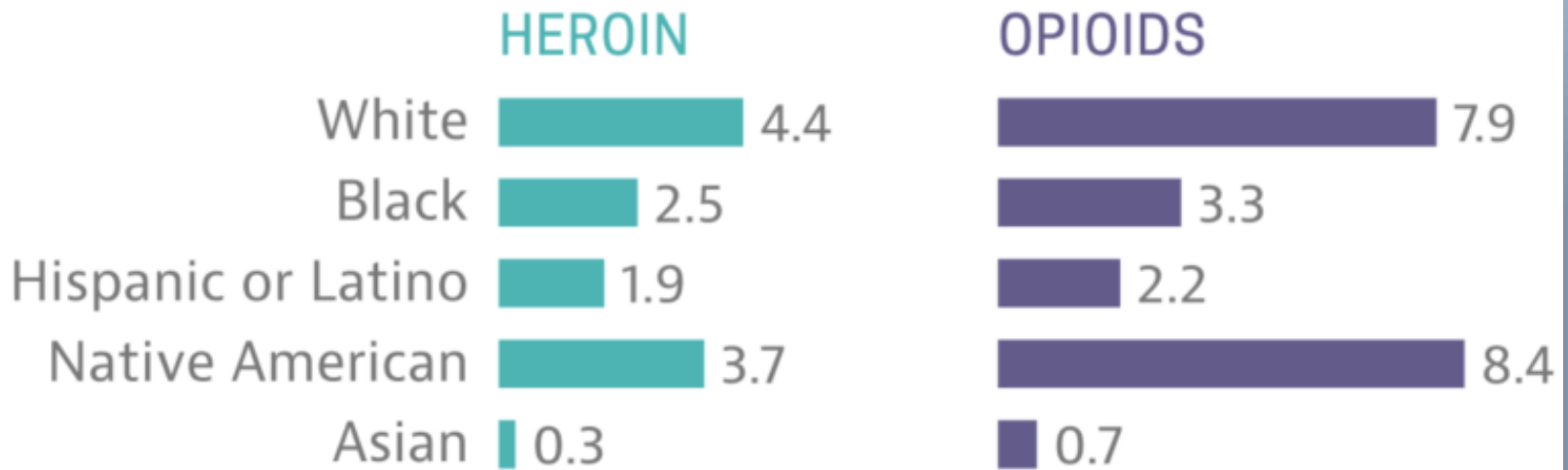


*Data from Substance Abuse and Mental Health Services Administration (SAMHSA)

Opioid Deaths by Race in 2014*



Overdose Deaths by Race in 2014 per 100,000 people



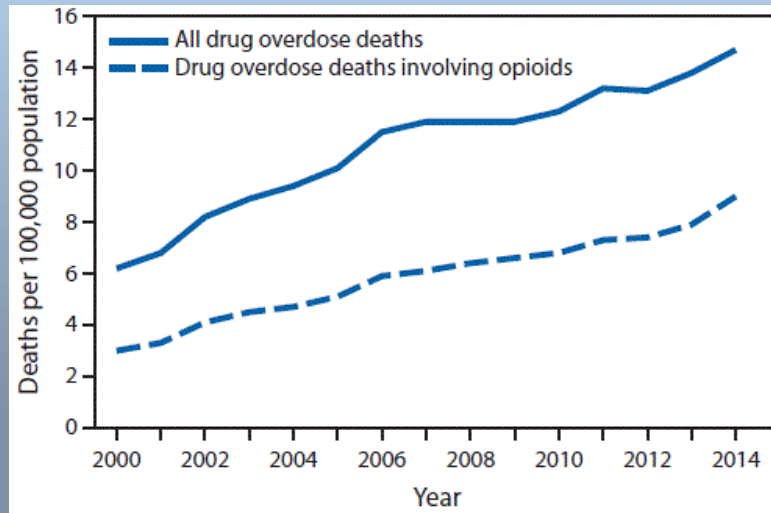
* Data from the Centers for Disease Control and Prevention (CDC)



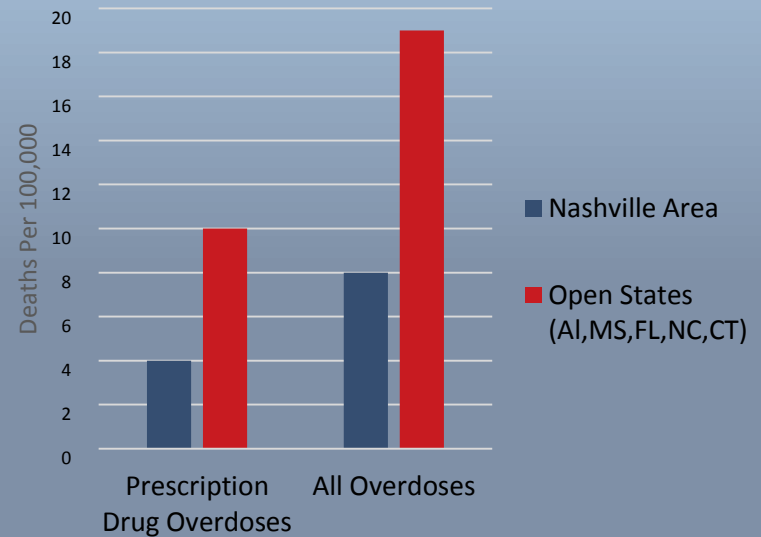
Drug Overdose Deaths

U.S.*

Nashville Area**

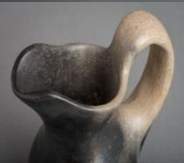


Age Adjusted Overdose Mortality Rates
2002-2013



*Rose A. Rudd, MSPH1; Noah Aleshire, JD1; Jon E. Zibbell, PhD1; et al. MMWR Morb Mortal Wkly Rep 2015;64:1387-1382 Increases in Drug and Opioid Overdose Deaths — United States, 2000–2014.

**State mortality data is matched with people in the patient registration package of RPMS. Once data is matched, mortality records are stored in RPMS.

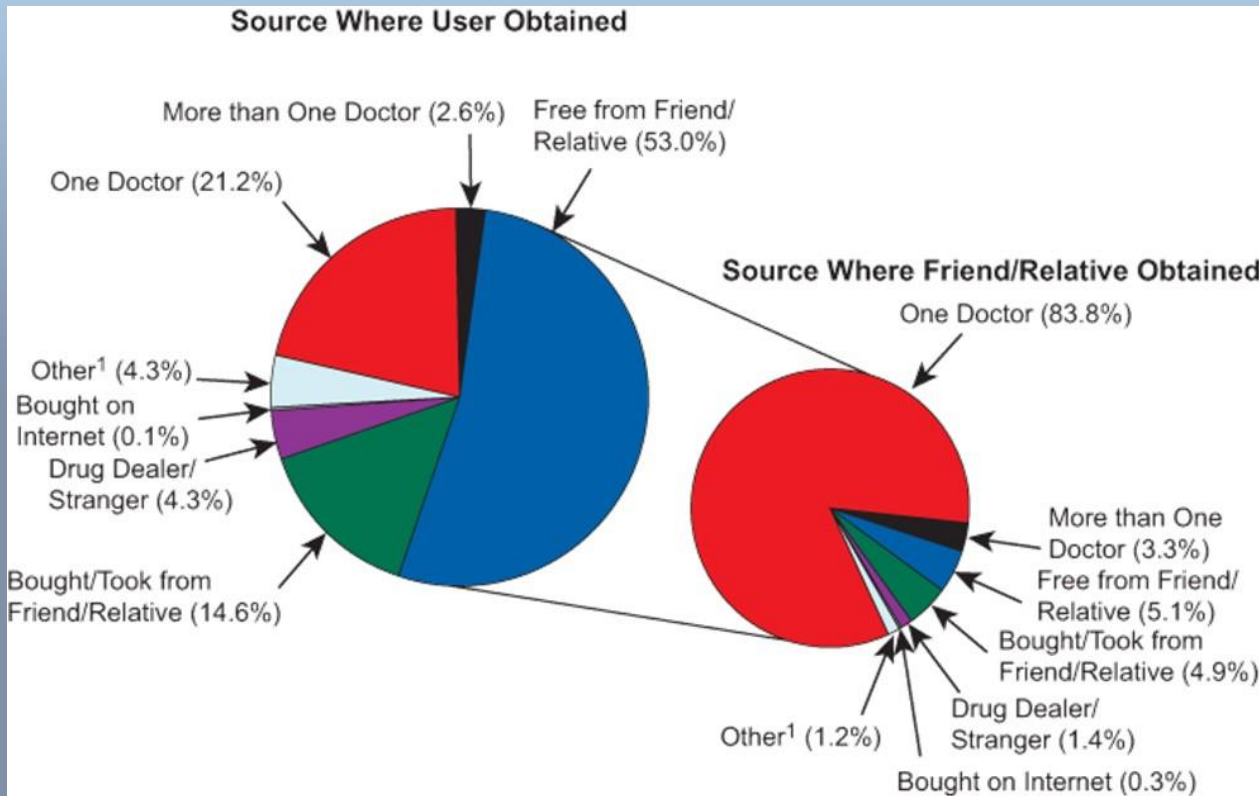


What We Don't Know



- The true clinical picture of substance misuse
- More precise mortality rates in USET states other than CT, FL, NC, AL, MS
- The whole picture of substance misuse across departments

Could this be Tribal Nation Specific?



Data from Substance Abuse and Mental Health Services Administration (SAMHSA)

Could this be Tribal Nation Specific?



- Arrests
- Hospitalizations
- Overdoses
- Convictions
- Housing drug tests



Potential Solutions: An Epidemiologist's Dream



- Could substance misuse become reportable?
 - Similar to the way certain infectious diseases are reportable to the state (tuberculosis, for example)
- Could all departments submit data to a centralized place, so that a comprehensive surveillance system is in place?





Contact information:
usetepi@usetinc.org
(615) 467-1547